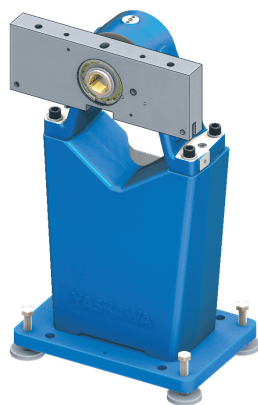


# H-500, H-1000, T-1000

## Positioner with horizontal rotation

### Headstock H and Tailstock T

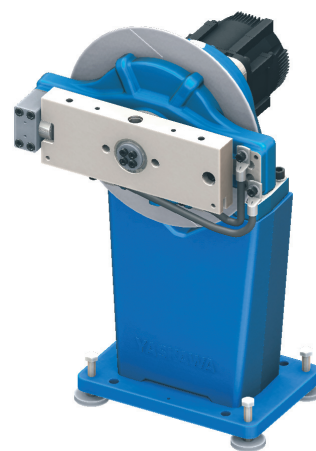
One station positioner for workpieces requiring rotation about one axis. The free standing headstock can be mounted directly on the floor at an appropriate distance from the tailstock. The head- and tailstock with MotoMount fixture mounting system must always be used together.



T-1000



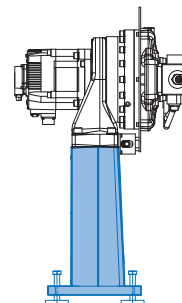
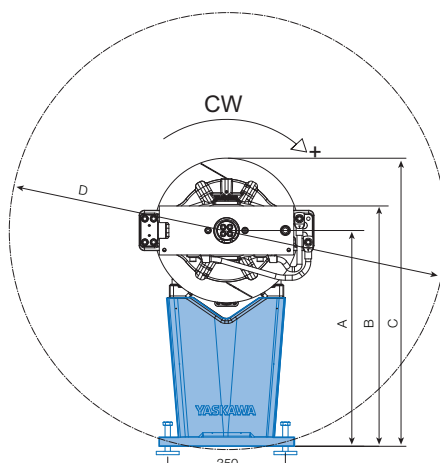
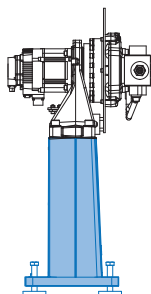
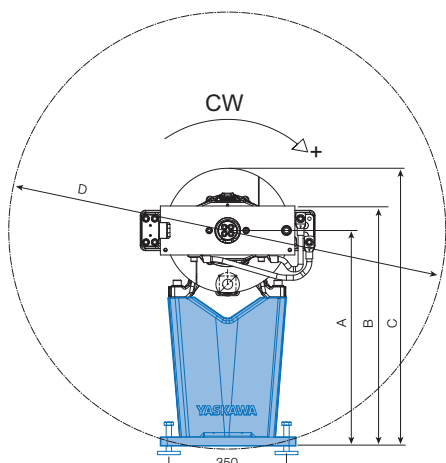
H-500D



H-1000D

Technical data		H-500D		H-1000D	
<b>Max. capacity</b>	load	<b>500 kg</b>		<b>1000 kg</b>	
	offset	191 mm		219 mm	
<b>Motor power</b>		1.3 kW		3.0 kW	
<b>Gear ratio</b>	reducer	165:1		170:1	
<b>Speed</b>	nominal	9.0 rpm		8.8 rpm	
	maximum	23 rpm		23 rpm	
<b>Torque</b>	rated	1177 Nm		2689 Nm	
	continuous rated	941 Nm		2151 Nm	
	peak	2354 Nm		5378 Nm	
<b>Rated welding current Standard</b>	100%	350 A		350 A	
	60%	460 A		460 A	
<b>Rated welding current Option</b>	100%	860 A		860 A	
	60%	1120 A		1120 A	
	35%	1380 A		1380 A	
<b>Max fixture width</b>	diameter	1300 mm	1700 mm	1300 mm	1700 mm
<b>Headstock Part No.</b>		<b>141502-100</b>	<b>141502-101</b>	<b>141504-100</b>	<b>141504-101</b>
<b>Tailstock Part No.</b>		<b>141506-100</b>	<b>141506-101</b>	<b>141506-100</b>	<b>141506-101</b>

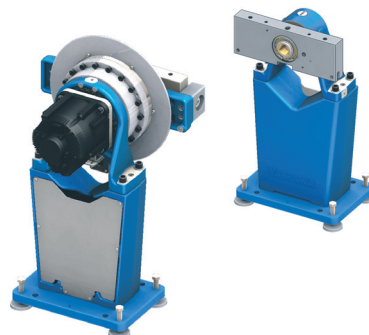
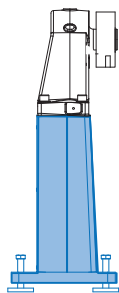
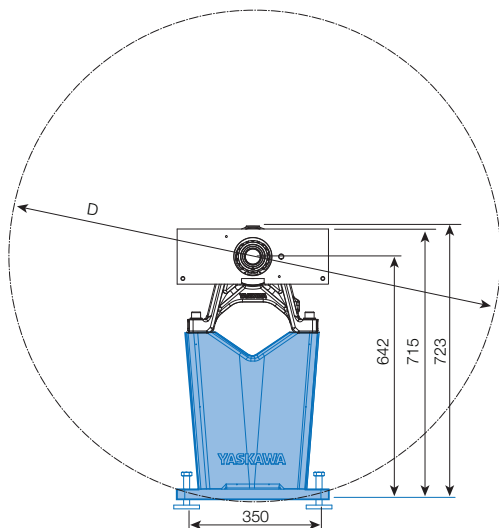
# H-500, H-1000



Type	Part No.	D	A	B	C
<b>H-500</b>	141502-100	1300	642	715	827
	141502-101	1700	842	915	1027

Type	Part No.	D	A	B	C
<b>H-1000</b>	141504-100	1300	642	715	857
	141504-101	1700	842	915	1057

# T-1000



Type	Part No.	D	A	B	C
<b>T-1000</b>	141506-100	1300	642	715	723
	141506-101	1700	842	915	923
	141507-100	1300	642	715	723
	141507-101	1700	842	915	923

The head- and tailstock must always be used together.

Technical data may be subject to change without previous notice  
© YASKAWA Nordic AB · 1070EN-00, 2016-09-27

# YASKAWA

YASKAWA Nordic AB  
PO Box 504, SE-385 25 Torsås  
SWEDEN  
Phone +46 (0)480 417 800  
www.motoman.eu

