

ROBOT OPTIONS

Torch Cleaning Equipment

Item		Part Number
Nozzle Cleaning Machine (100VAC Input)		K-2724
Nozzle Cleaning / Cutting Machine (100VAC Input)		K-2725
Wire Cutting Machine (100VAC Input)		K-2726
Spring Reamer & Vacuum Cleaner (100VAC Input)		L-10748
Step Down Transformer (Required for all Stations)		VC300J
For Cleaning and Cleaning & Cut Stations	13mm Reamer Drill (#8 Nozzle)	5096-145
	13mm Reamer Bushing (#8 Nozzle)	5096-148
	16mm Reamer Drill (#10 Nozzle)	5096-146
	16mm Reamer Bushing (#10 Nozzle)	5096-149
	19mm Reamer Drill (#12 Nozzle)	5096-147
For Cut and Cleaning & Cut Stations	19mm Reamer Bushing (#12 Nozzle)	5096-150
	Shearing Blade for Wire Cutter	5096-306
	Shearing Blade for Wire Cutter	5096-307
Clean Kit Stand Assembly		1L0298B00



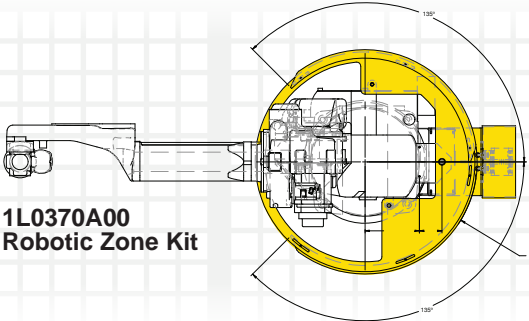
K-2726 Wire Cutting Machine



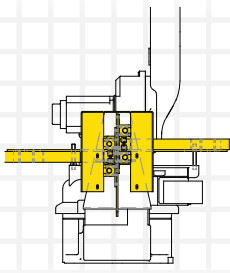
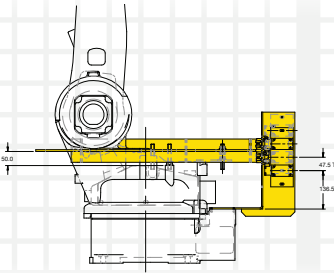
K-2724 Nozzle Cleaning Machine



K-2725 Nozzle Cleaning / Cutting Machine



1L0370A00 Robotic Zone Kit



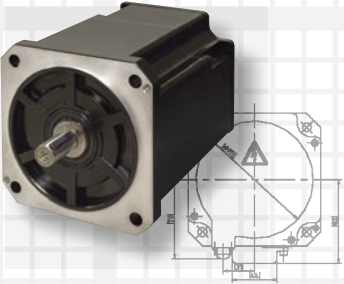
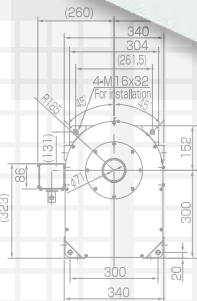
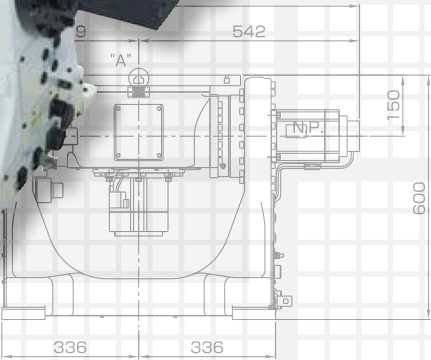
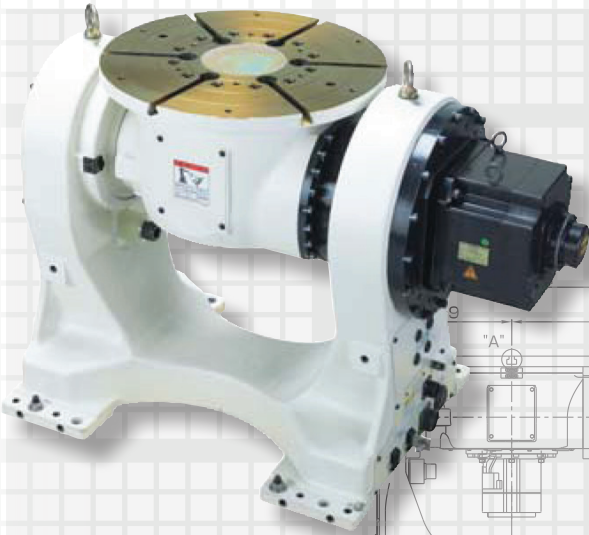
Robotic Zone Kits

Item	Part Number
2 Station Zone Kit for FD-V8 / FD-B6	1L0448A00
2 Station Zone Kit for FD-V8L / FD-B6L	1L0370A00
3 Station Zone Kit for FD-V8L / FD-B6L	1L0396A00
400mm Robot Pedestal for FD-V8/B6 & FD-V8L/B6L & FD-V25	L-3626
600mm Robot Pedestal for FD-V8/B6 & FD-V8L/B6L & FD-V25	L-3626-600
800mm Robot Pedestal for FD-V8/B6 & FD-V8L/B6L & FD-V25	L-3626-800



OTC can demonstrate increased welding efficiency at your door!

EXTERNAL AXIS SOLUTIONS



888-OTC-ROBO

www.DAIHEN-USA.com

TILT-ROTATE POSITIONERS

HEADSTOCK POSITIONERS

EXTERNAL AXIS MOTOR PACKAGES

SINGLE SOURCE SUPPLIER

North American Corporation Headquarters  
1400 Blausen Dr, Tipp City, , Ohio 45371 / Phone: (937) 667-0800

Technical Centers  
Detroit, MI  
Atlanta, GA



www. DAIHEN-USA.com





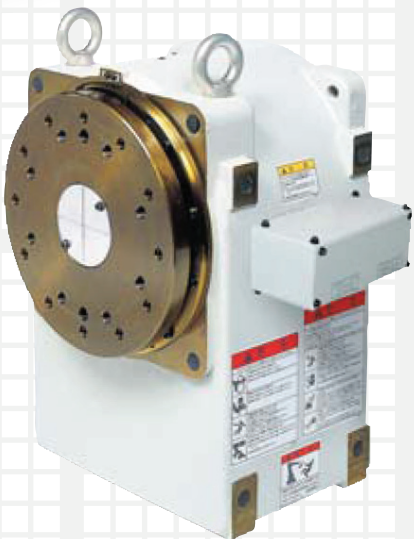
# HEADSTOCK POSITIONERS

## Features and Benefits

OTC Daihen Headstock positioners offer a wide payload range of 550 lbs (250kg), 1100 lbs (500kg) and 2200 lbs (1000kg). This variety offers a range of options based on the specific application requirement allowing your integration project to be cost-effective, simple and easy to implement.



Model A2PB-250

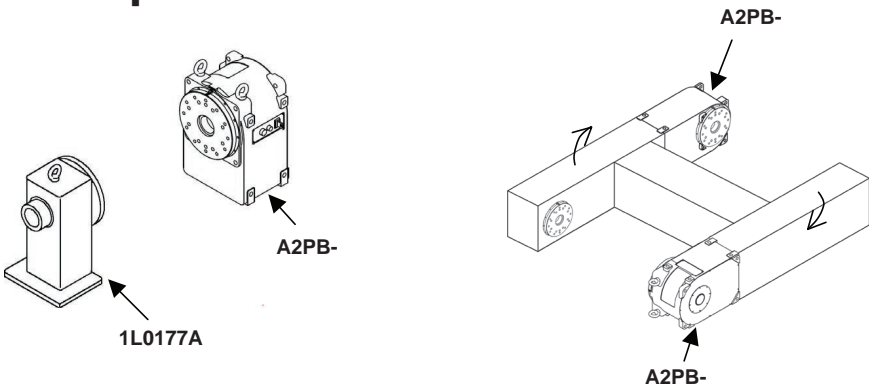


Model A2PB-500



Model A2PB-1000

## Examples:

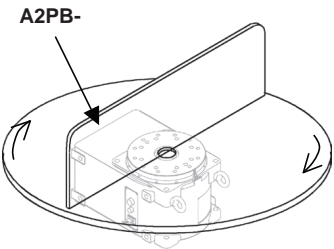


### Head and Tail Stock

Use the DAIHEN standard head and tail stock for long parts.

### A and B Side Positioner

Use the DAIHEN standard head stock to make customized positioners.

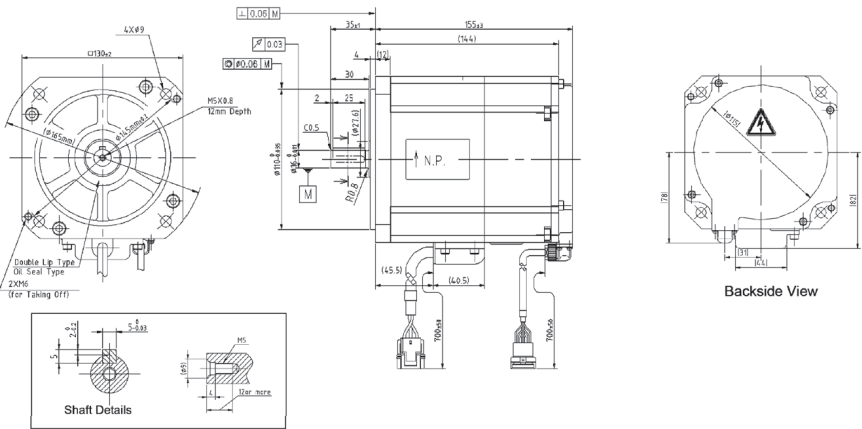


### A and B Side Table

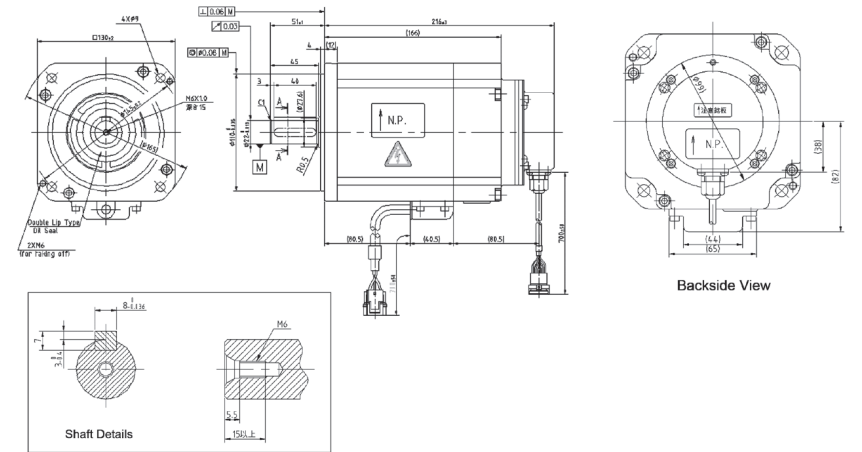
Use the DAIHEN standard head stock as a driving mechanism for table rotation. This system is simple and it can be controlled from the teach pendant.

**Note:** Above illustrations are examples only. Please see regional sales manager for detailed requirements of configuration.

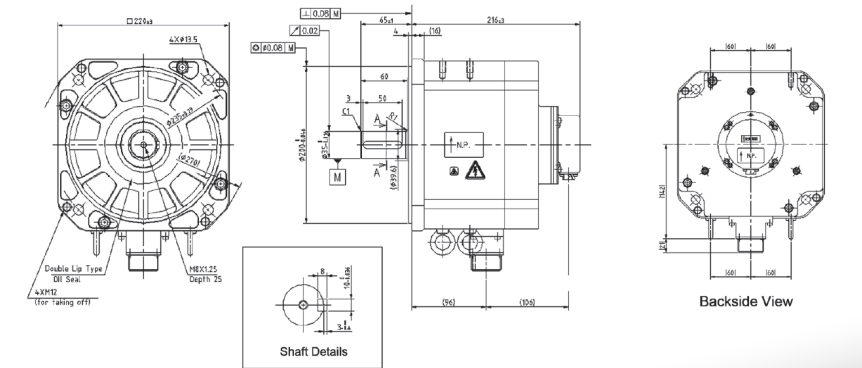
### 1.2kW Motor



### 2.0kW Motor



### 4.5kW Motor



## Welbee series



WB-P400



WB-P500L



WB-M350L



WB-M350



WB-M500

**FD** Friendly series  
Arc Welding Robots



EXTERNAL AXIS MOTOR PACKAGES

Basic Specifications

- Main Cabinet can have up to 2 external axes. (If 3 or more external axis required, it requires additional external axis cabinet located separately from the main cabinet)
- Motors have 3 variations, 1.2kW, 2.0kW, 4.5kW
- If more than 5 axes required, please contact our sales for special configuration

Motor	Specifications	Part Number
1.2kW	<div>Output Power: 1200W</div> <div>Rated Speed: 2000 rpm</div> <div>Rated Torque: 5.7 N•m</div> <div>Maximum Torque Peak: 16 N•m</div> <div>Inertia (Rotor + Brake): 6.1x10<sup>-4</sup>kg•m<sup>2</sup> (Rotor), 0.5x10<sup>-4</sup>kg•m<sup>2</sup> (Brake)</div> <div>Static Friction Torque on Brake: 9.0 N•m or more</div> <div>Weight: 18 lbs (8.3kg)</div> <div>Assembling:Running:</div> <div>Max F<sub>R</sub>: 640 NMax F<sub>R</sub>: 640 N</div> <div>Max F: 1300 NMax F: 340 N</div> <div>Max F1: 1300 NMax F1: 340 N</div>	W-L02641
2.0kW	<div>Output Power: 2000W</div> <div>Rated Speed: 2000 rpm</div> <div>Rated Torque: 9.5 N•m</div> <div>Maximum Torque Peak: 30 N•m</div> <div>Inertia (Rotor + Brake): 12.2x10<sup>-4</sup>kg•m<sup>2</sup> (Rotor), 0.5x10<sup>-4</sup>kg•m<sup>2</sup> (Brake)</div> <div>Static Friction Torque on Brake: 12 N•m or more</div> <div>Weight: 27 lbs (12.3kg)</div> <div>Assembling:Running:</div> <div>Max F<sub>R</sub>: 1700 NMax F<sub>R</sub>: 640 N</div> <div>Max F: 1400 NMax F: 340 N</div> <div>Max F1: 1400 NMax F1: 340 N</div>	W-L02152
4.5kW	<div>Output Power: 4700W</div> <div>Rated Speed: 2000 rpm</div> <div>Rated Torque: 22.5 N•m</div> <div>Maximum Torque Peak: 54 N•m</div> <div>Inertia (Rotor + Brake): 55.0x10<sup>-4</sup>kg•m<sup>2</sup> (Rotor), 5.1x10<sup>-4</sup>kg•m<sup>2</sup> (Brake)</div> <div>Static Friction Torque on Brake: 42 N•m or more</div> <div>Weight: 61.7 lbs (28.0kg)</div> <div>Assembling:Running:</div> <div>Max F<sub>R</sub>: 2300 NMax F<sub>R</sub>: 1500 N</div> <div>Max F: 1900 NMax F: 490 N</div> <div>Max F1: 1900 NMax F1: 490 N</div>	W-L02157

W**ee**bee series

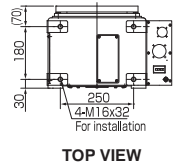


WB-A350P

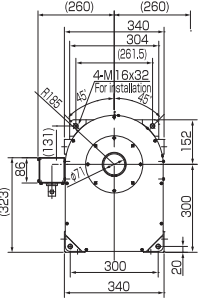
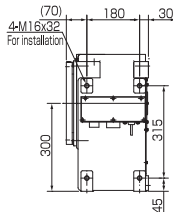


WB-W400

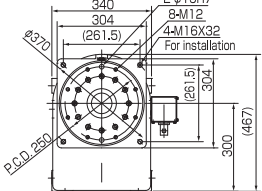
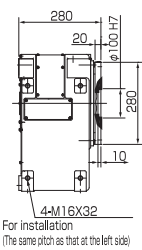
A2PB-250



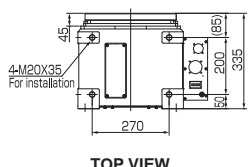
TOP VIEW



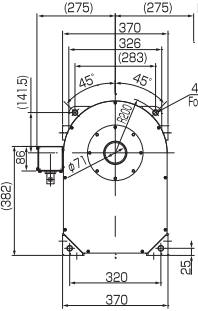
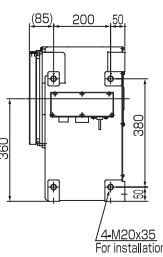
Mountable on both right and left sides of the connector box (factory mounted).



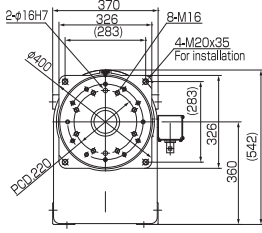
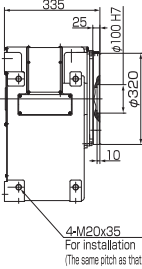
A2PB-500



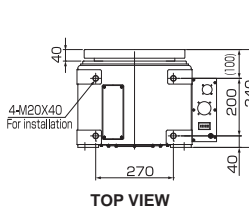
TOP VIEW



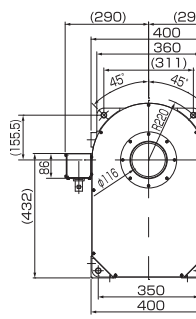
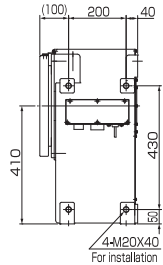
Mountable on both right and left sides of the connector box (factory mounted).



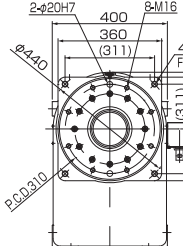
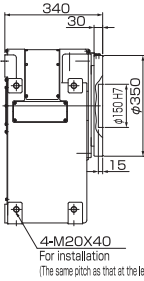
A2PB-1000



TOP VIEW



Mountable on both right and left sides of the connector box (factory mounted).



FD-H5

FD-B6

FD-B6L

FD-V8

FD-V8L

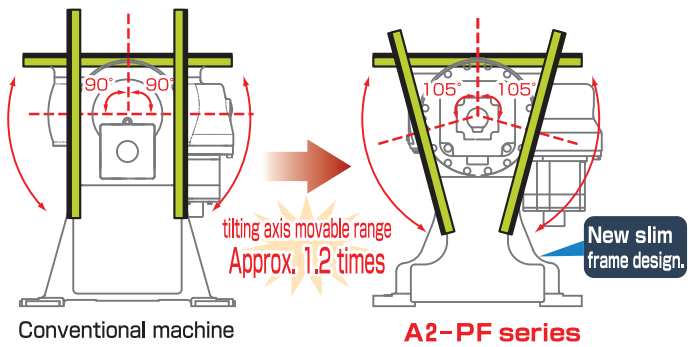
FD-V20

FD-B4S

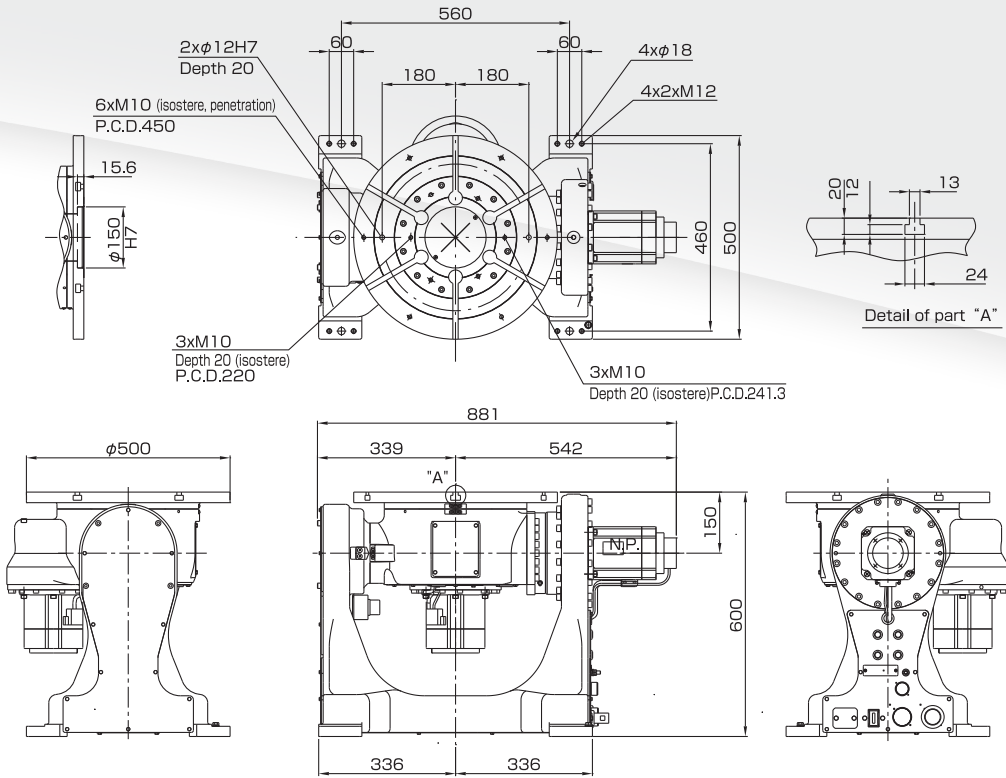
TILT-ROTATE POSITIONERS

Features and Benefits

OTC Daihen Tilt-Rotate positioners are designed for arc welding applications. They have been re-designed for improved high-speed motion and increased versatility. Easy connection and installation features save both time and effort during integration. There are 3 variations in payload from 660 lbs (300kg) to 2200 lbs (1000kg).

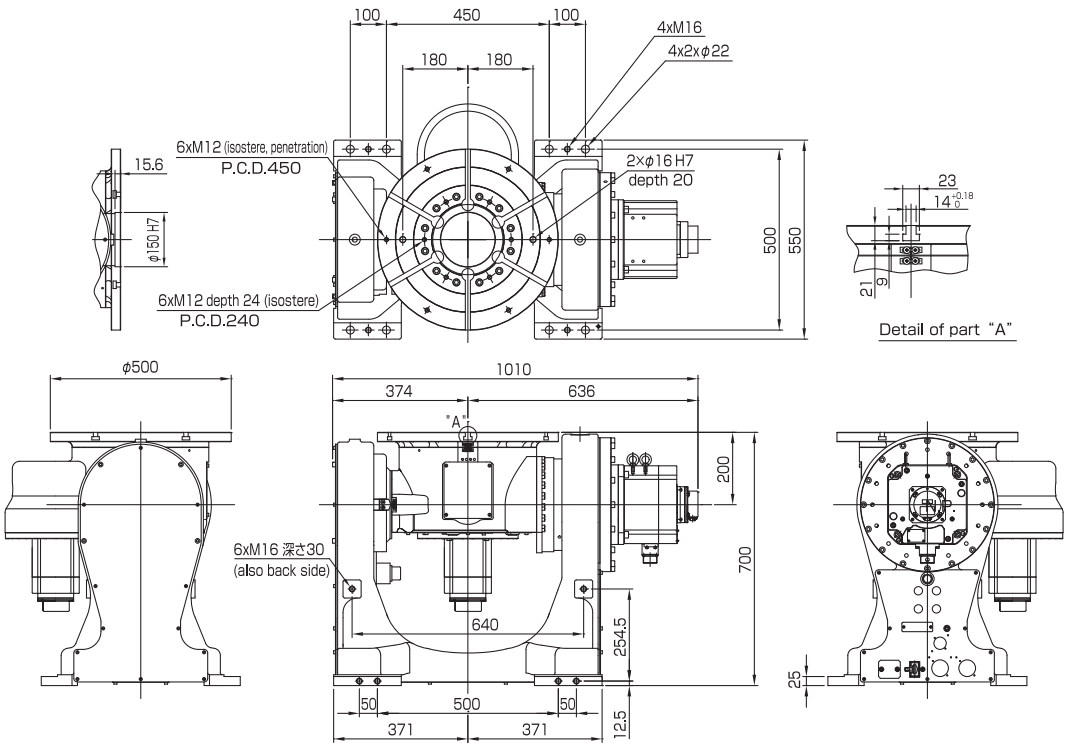


A2PF-300, A2PF-500



Item		A2PF-300	A2PF-500	A2PF-1000
Max. Payload [lbs]		660 (300kg)	1101 (500kg)	2203 (1000kg)
Max. Offset of C.O.G from center		3.94" (100mm) at max load	3.15" (80mm) at max load	3.55" (90mm) at max load
Max. Offset of C.O.G from disk surface		5.91" (150mm) at max load	4.92" (125mm) at max load	7.01" (178mm) at max load
Rotation Speed	Tilt	2.18 rad/s (125 deg/s)	1.47 rad/s (84 deg/s)	1.4 rad/s (82 deg/s)
	Rotate	3.14 rad/s (180 deg/s)	2.83 rad/s (162 deg/s)	2.9 rad/s (166 deg/s)
Moving Range	Tilt	-135 to +135 deg	-135 to +135 deg	-135 to +135 deg
	Rotate	400 deg	400 deg	400 deg
Rotational moment	Tilt	882Nm	1347Nm	3704 Nm
	Rotate	294Nm	392Nm	882 Nm
Allowable Inertia	Tilt	30.5kg•m <sup>2</sup>	47.3kg•m <sup>2</sup>	187.9kg•m <sup>2</sup>
	Rotate	9.1kg•m <sup>2</sup>	26.2kg•m <sup>2</sup>	53.1kg•m <sup>2</sup>
Repeatability		0.0031" (0.08mm)		
Weight [lbs]		572.7lbs (260Kg)		1034lbs (470Kg)
Max. Weld Current		500A 100%		
Installation		Floor Mount		
Temperature Rating		0-45 deg (Celsius) 20-80% (Humidity)		
Color		White		

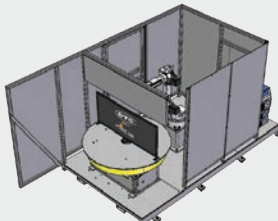
A2PF-1000



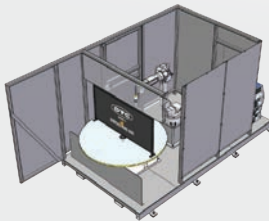
ECO-ARC SERIES



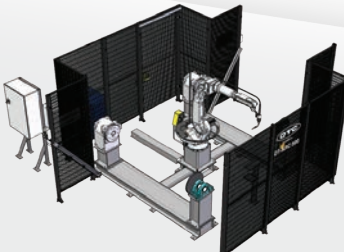
ED-ARC 100



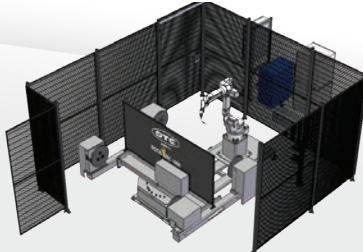
PT-ARC SERIES



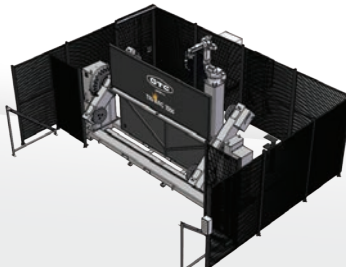
SERVO-ARC SERIES



DT-ARC 500



ROTA-ARC 1000



TRI-ARC 1000

Pre-Engineered Arc Welding Cells