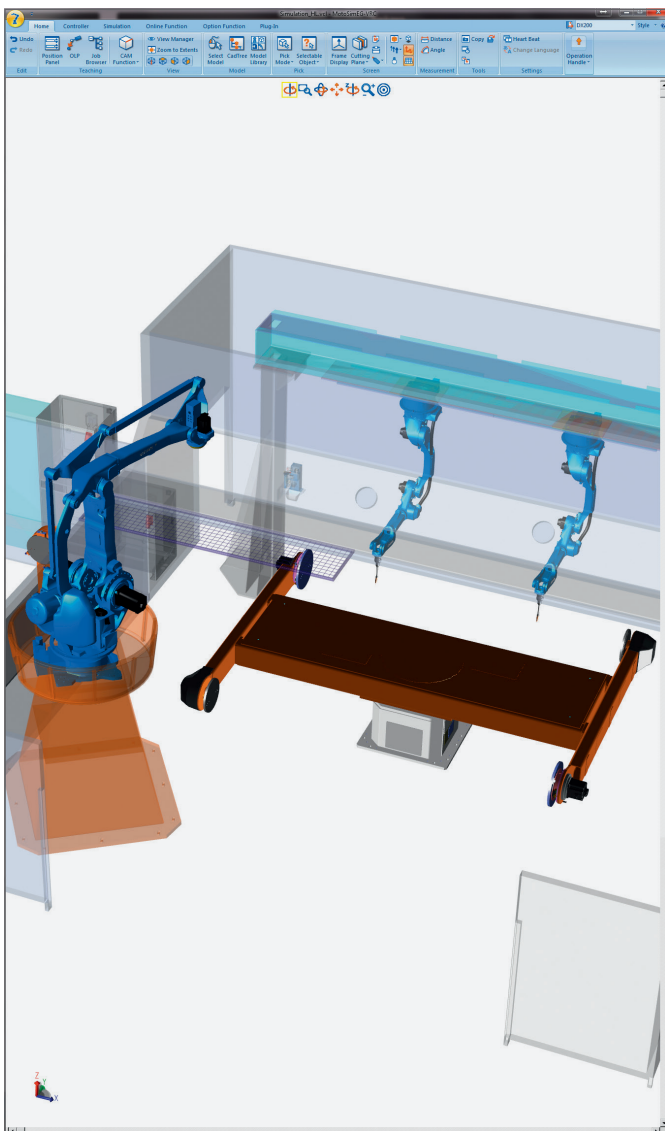


MOTOSim EG-VRC

Powerful Simulation Software

Offline Programming, 3D Simulation,
Virtual Robot Control



KEY BENEFITS

- Offline programming of complex systems
- Minimisation of setup, non-productive and commissioning times
- Advanced control functions and simulation of the YASKAWA product family, including robots, gantries, tracks and positioners

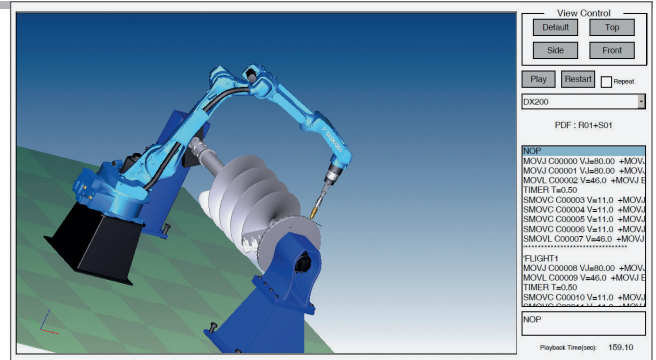
FURTHER FEATURES

- Comprehensive tool of the digital factory with simulation functions, such as collision detection, reach analysis and cycle time calculation
- Supports numerous process applications, such as arc welding, spot welding, cutting, handling, painting
- Visualisation of the real teach pendant from generation NX100 onwards
- Supports the INFORM programming language
- Complete simulation of the robot software in the PC environment
- Creation of system configurations equivalent to the real controller
- Offline programs can be transferred to the real controller without the need for compilation
- Optimisation of existing robot programs without interrupting production
- Visualisation and calculation of the real robot paths
- Various measurement and analytical tools
- Simple integration of user models into the available YASKAWA model library
- Supports multi-robot and multi-controller simulations
- Control of robots and external axes including synchronous robot motion
- Supported import formats: IGES, STEP, Inventor, ProE/Creo, Solidworks, Catia V5, SAT, Parasolid, HSF, HMF, STL, 3DS, RWX, DXF, WRML and PLY

Important Functions:

3D-PDF

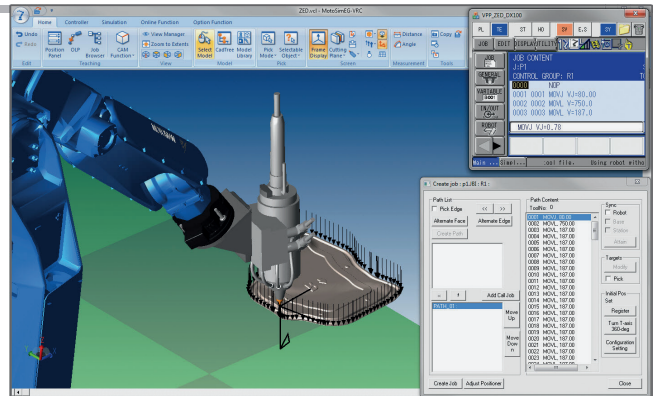
- Simple exporting of simulation result as 3D PDF or AVI file
- Visualisation of the robot layout



3D view file (please open with Firefox or InternetExplorer)
<http://www.motoman.com/motomedia/MotoSimFile3D.pdf>

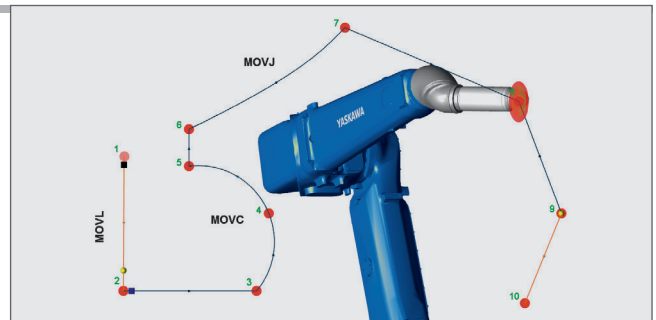
CAD/CAM

- Automatic path generation on the basis of component surfaces or edges
- Setting of user-defined application parameters
- Generation of complete robot programs
- Jobs can be adapted to changed component positions with minimal effort



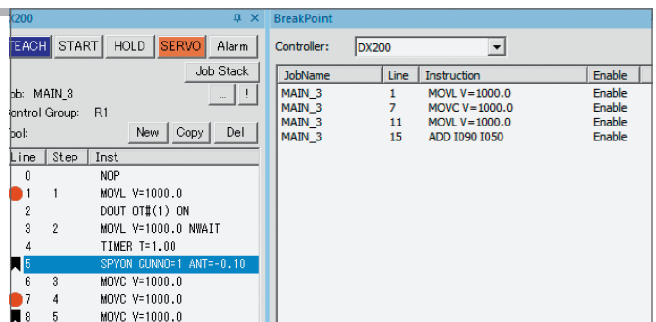
Visual Path

- Visualisation of the theoretical robot motion (without approximate positioning)
- Points can be shifted or added easily
- Visualisation of different instructions (e.g. TIMER, DOUT, Anticipation, etc.)



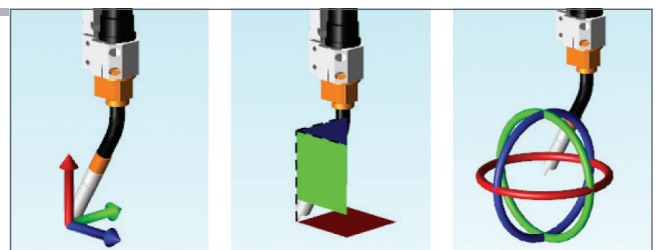
Debug Function

- Creation of breakpoints (points at which the program is stopped)
- Creation of bookmarks (highlighting of important positions in programs)
- Debug monitor (important variables and inputs/outputs can be monitored)



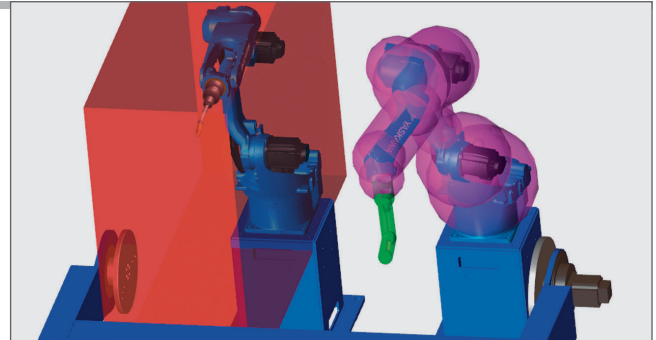
Handle Display

- Modification of the robot position or movement of individual robot axes by dragging with the mouse



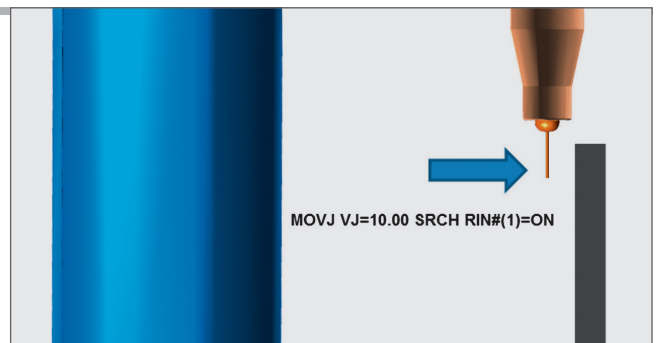
Functional Safety Unit

- Visualisation of the monitored areas
- Optical check of the FSU settings/parameters



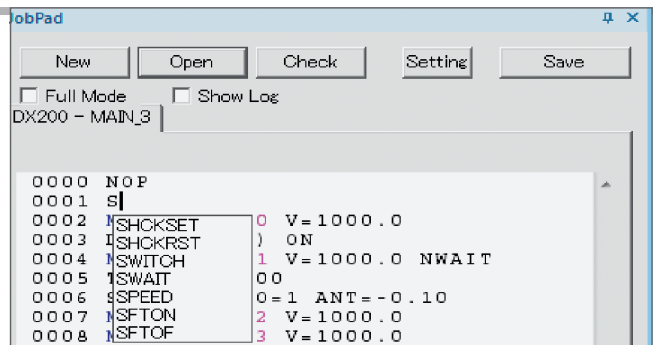
Search Function (wire search)

- Creation/pre-programming of the search programs
- Complete support of all instructions required for the search function



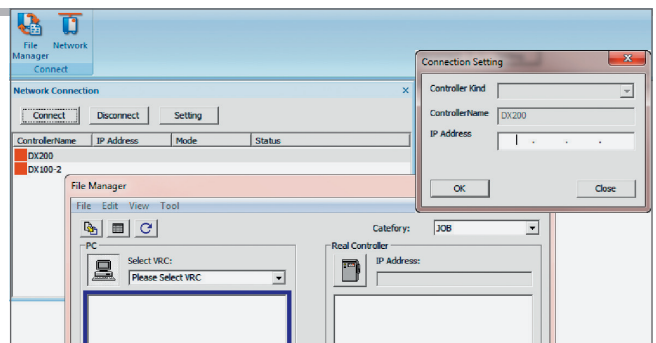
JobPad

- Writing of jobs with the aid of an optimised text editor
- Syntax check
- Drop-down menu with all enabled instructions



Network-Funktion

- Ethernet connection to real controller
- Visualisation of robot motions in real time
- Data exchange with integrated file manager (jobs, parameters, etc.)



System Requirements (Min.)

- Windows® 7 (32 or 64 bit)
- Intel Core 2 Duo or higher
- 2 GB RAM
- 3D graphics card
- 1 GB free space on the hard drive

YASKAWA Headquarters

YASKAWA Europe GmbH
Robotics Division
Yaskawastraße 1
85391 Allershausen, Germany
Tel. +49 (0) 8166/90-0
Fax +49 (0) 8166/90-103

YASKAWA ACADEMY and sales office Frankfurt

YASKAWA Europe GmbH
Robotics Division
Hauptstraße 185
65760 Eschborn, Germany
Tel. +49 (0) 6196/77725-0
Fax +49 (0) 6196/77725-39

YASKAWA GROUP

AT YASKAWA Austria
Schwechat/Wien
+43(0)1-707-9324-15

CZ YASKAWA Czech s.r.o.
Rudná u Prahy
+420-257-941-718

ES YASKAWA Ibérica, S.L.
Gavà/Barcelona
+34-93-6303478

FR YASKAWA France SARL
Saint-Aignan-de-Grand-Lieu
+33-2-40131919

FI YASKAWA Finland Oy
Turku +358-(0)-403000600

GB YASKAWA UK Ltd.
Banbury +44-1295-272755

IT YASKAWA Italia s.r.l.
Torino +39-011-9005833

IL YASKAWA Europe Technology Ltd.
Rosh Ha'ayin +972-3-9004114

NL YASKAWA Benelux B.V.
Son +31-40-2895500

PL YASKAWA Polska Sp. z o.o.
Wrocław +48-71-7928670

RU YASKAWA Nordic AB
Moskva +46-480-417-800

SE YASKAWA Nordic AB
Torsås +46-480-417-800

SI YASKAWA Slovenia
Ribnica +386-1-8372-410

TR YASKAWA Turkey Elektrik
Ticaret Ltd. Sti.
İstanbul +90-216-5273450

ZA YASKAWA Southern Africa (PTY) Ltd
Johannesburg +27-11-6083182

DISTRIBUTORS

BG ARAMET ROBOTICS Ltd.
Yambol +359-885 317 294
Kammarton Bulgaria Ltd.
Sofia +359-02-926-6060

CH Messer Eutectic Castolin
Switzerland S.A.
Dällikon +41-44-847-17-17

DK Robotcenter Danmark
Løsning +45 7022 2477

EE RKR Seadmed OÜ
Tallinn/Estonia +372-68-35-235

GR Gizelis Robotics
Nea Kifissia +30-2106251455

HU Flexman Robotics Kft
Budapest +36-30-9510065

LT Profibus UAB
Panevezys +370-45-518575

NO Skala Robotech AS
Lierstranda +47-32240600

PT ROBOPLAN Lda
Aveiro +351-234 943 900

RO Sam Robotics srl
Timisoara +40-720-279-866
MPL Automation S.R.L.
Satu Mare +40 (0) 261 750 741

