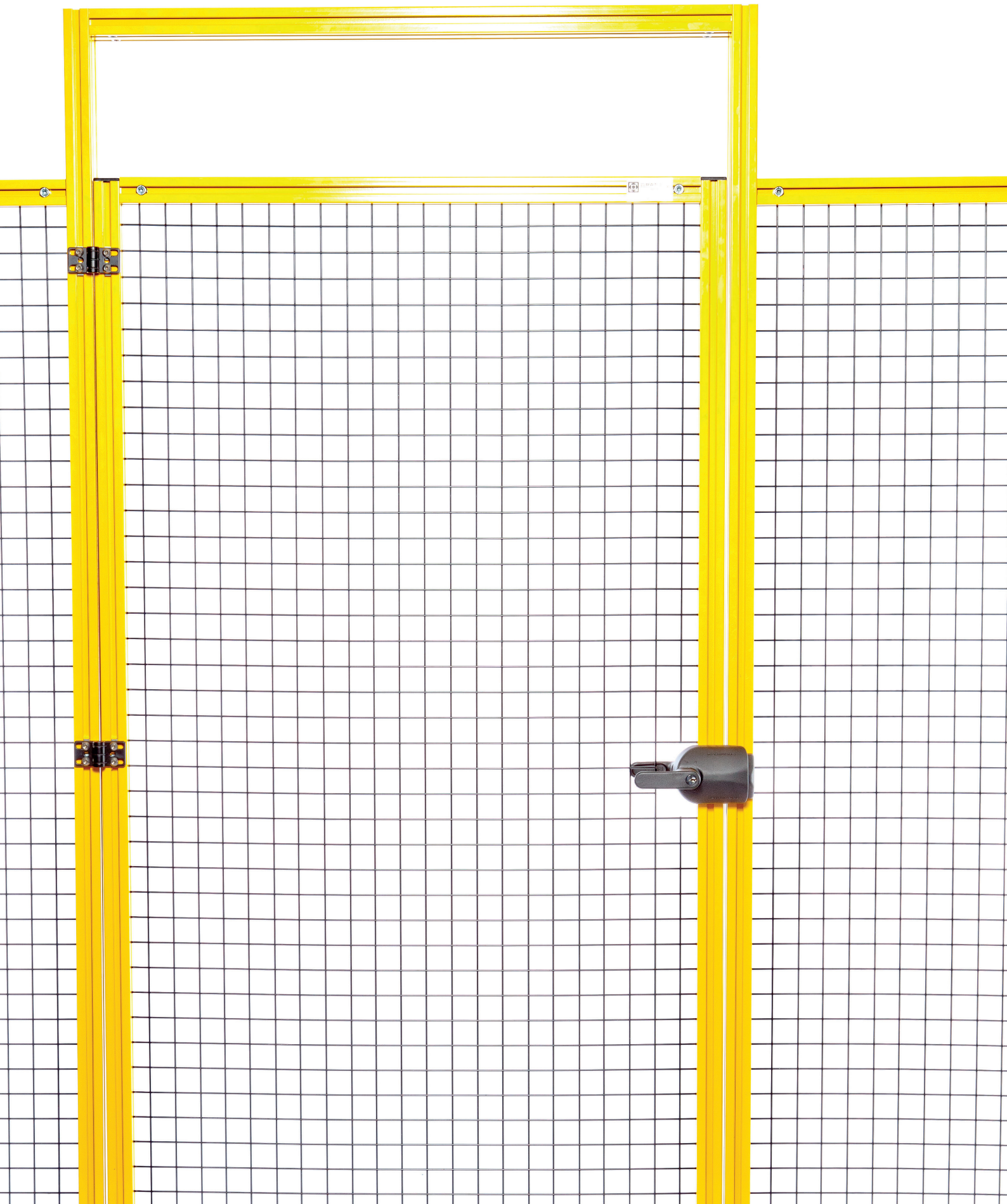




PARTS CATALOGUE







1Guard Modular Safety

The 1Guard modular safety system is an affordable way to protect you and your employees in the workplace from hazardous machinery and equipment. Our modular guarding is totally customisable and can be easily modified at any time as it is constructed from our SlotPro aluminium T-slot extrusion and uses our SlotPro components.

Assembled from strong, robust 40x40 aluminium slotted posts with 150x150mm removable foot plates and electrogalvanized mesh, powder coated black and other key SlotPro components. Our systems are extremely fast to assemble and install making it ideal for custom safety applications. We can design a custom guarding system to suit your requirements and send to you as a kit set, ready to assemble on your site with just a 5mm hex key!

Key Features of 1Guard:

- Fully modular systems make additions and changes quick, easy and cost effective with a weld-free assembly installation.
- Guarding can be disassembled and relocated or reconfigured to suit your changing needs at any time because of its modular construction.
- Hinged, sliding and cantilevered gate options.
- Doors, interlocks and area sensors are available as part of a full safety system.
- Choice of mesh, polycarbonate, perforated sheet and solid panels.
- Mesh is electro galvanised prior to powder coating for additional corrosion resistance in harsh environments.
- Panels sizes are fully customisable to your requirements as mesh can be easily trimmed to size.
- Our system is the #1 modular safety guarding system and designed to comply with the AS4024.1 Standard.



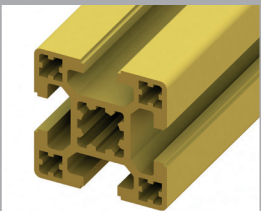
ROBOTICS • AUTOMATION • CONVEYORS

sales@autoline.nz | www.autoline.nz | 0800 37 55 66

1GUARD MODULAR SAFETY SYSTEM

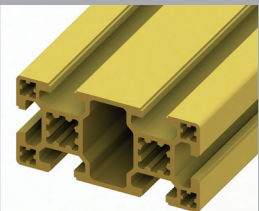
SAFETY POSTS

40 x 40 SlotPro Profile,
Safety Post
Powder Coated



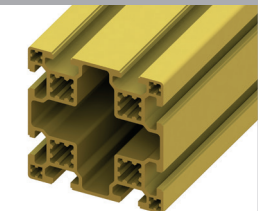
Code: 1.0404.4.SPSSPC

40 x 80 SlotPro Profile,
Safety Post
Powder Coated



Code: 1.0408.6.SPRSPC

80 x 80 SlotPro Profile,
Safety Post
Powder Coated



Code: 1.0808.8.SPSSPC

SCREWS

M6 x 16 304 Cap
Socket Screw



Code: BHM6016

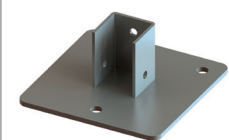
M6 x 20 304 Cap
Socket Screw



Code: BHM6020

SAFETY FEET

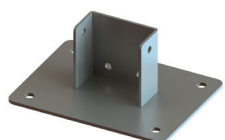
150 x 150 Foot Plate,
Includes Fittings



yellow or grey powder coated

Code: 1G.1515.FPY.F

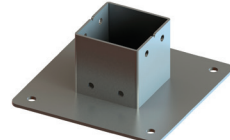
150 x 200 Foot Plate,
Includes Fittings



yellow or grey powder coated

Code: 1G.1520.FPY.F

200 x 200 Foot Plate,
Includes Fittings



yellow or grey powder coated

Code: 1G.2020.FPY.F

SCREWS

M8 x 16 304 Cap
Socket Screw



Code: BHM8016

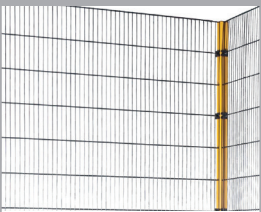
M8 x 20 304 Cap
Socket Screw



Code: BHM8020

SAFETY MESH OPTIONS AND MATCHING CLIPS

19 x 145mm Aperture
Black Powder Coated
Mesh



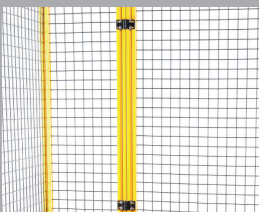
Code: 1G.1945.MPC

19 x 145mm
Single Mesh Clip
Includes Fittings



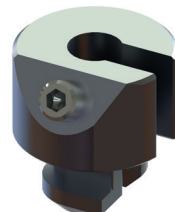
Code: 1G.0102.MC

40 x 40mm Aperture
Black Powder Coated
Wire Mesh



Code: 7.04.1912.GGWM

40 x 40mm Single
Mesh Clip

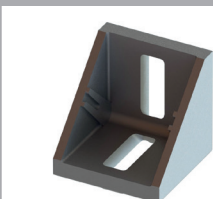


Code: 6.04.01.GGWC

For more
information
on our wide range
of products
Call 0800 37 55 66
or visit our website
www.autoline.nz

ANGLE BRACKETS AND CONNECTORS

4 Series Angle bracket
for 40mm Extrusion -
Die Cast Zinc



Code: 6.04.SPB40

4 Series Angle Bracket
38mm x 76mm - for
40mm Extrusion



Code: 6.04.SPB48

4 Series SlotPro
Universal Connector



Code: 2.04.SPUC

Connectors to be used
for connecting horizontal
beams as shown in photo



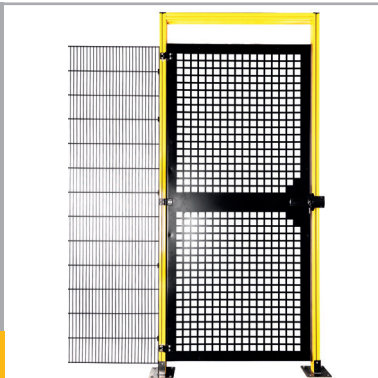
1GUARD MODULAR SAFETY SYSTEM

GATES

Pressed Panel Gate Powder Coated Black (Standard)

- 2 x 40x80 Posts
- Top Lintel
- Hinges
- Black Pressed Panel
- Handles
- Magnetic Latch

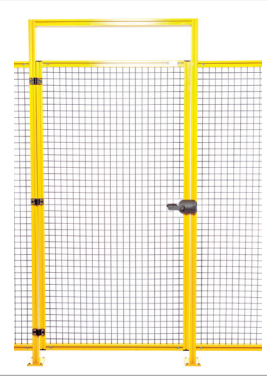
Code: 1G.PPGATE



Black Powder Coated Mesh Gate

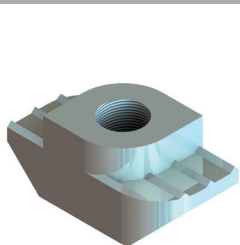
- 2 x 40x80 Posts
- Top Lintel,
- 40 x 40mm or 19 x 145mm Aperture Mesh Option
- Hinges
- Handles
- Magnetic Latch

Code: 1G.MMGATE



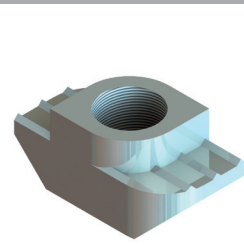
FIXTURES & FITTINGS

4 Series Threaded T Nut M6



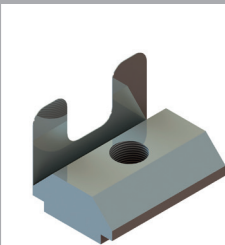
Code: 3.04.T.SP6

4 Series Threaded T Nut M8



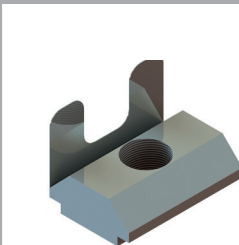
Code: 3.04.T.SP8

4 Series SlotPro Roll in Slot Nut M6



Code: 3.04.R.SP6

4 Series SlotPro Roll in Slot Nut M8



Code: 3.04.R.SP8

4 Series SlotPro Slotted Hinge



Code: 4.04.SPSLH

HINGES, HANDLES AND LATCHES

4 Series Slotted Hinges with Locking Lever



Code: 4.04.SPSLHL

SlotPro Magnetic Catch



Code: 4.04.SPMC

SlotPro Ball Catch



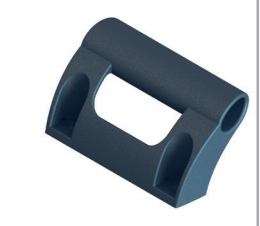
Code: 4.04.SPBC

SlotPro Handle, Black 152mm



Code: 4.04.SPBH

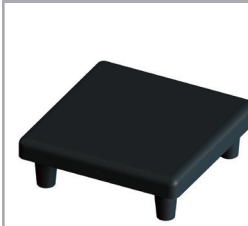
SlotPro Machine Handle 135mm



Code: 4.04.SPMH

COVER CAPS

4 Series Cover Cap 40x40



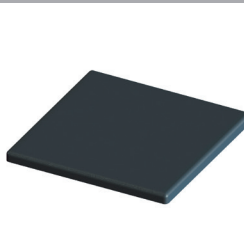
Code: 5.04.SP40

4 Series Cover Cap 40x80



Code: 5.04.SP80

8 Series Cover Cap 80x80

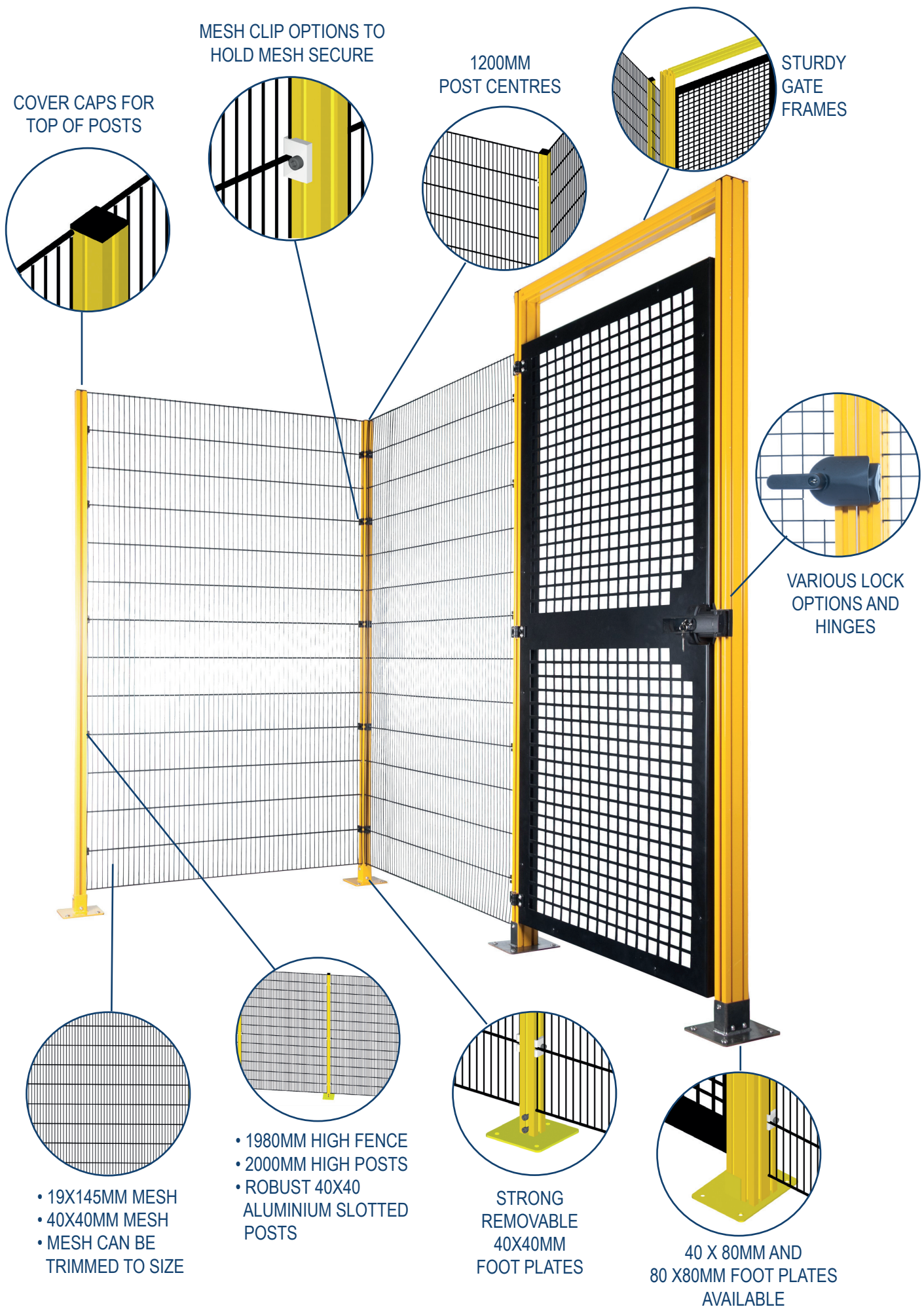


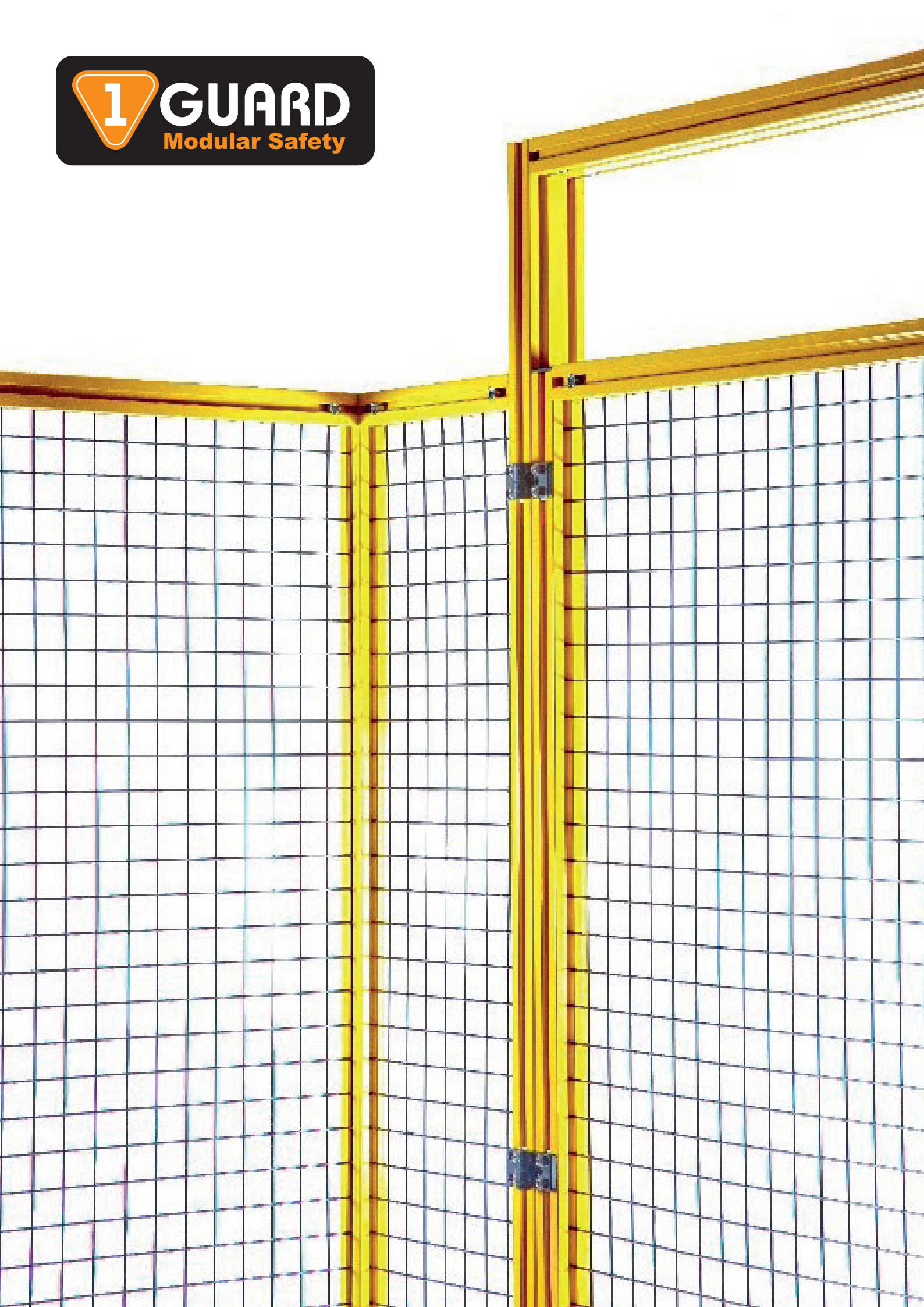
Code: 5.08.SP80



For more information
on our wide range of products
Call 0800 37 55 66
or visit our website
www.autoline.nz

1GUARD MODULAR SAFETY FEATURES







ROBOTICS • AUTOMATION • CONVEYORS

0800 37 55 66 | sales@autoline.nz | www.autoline.nz