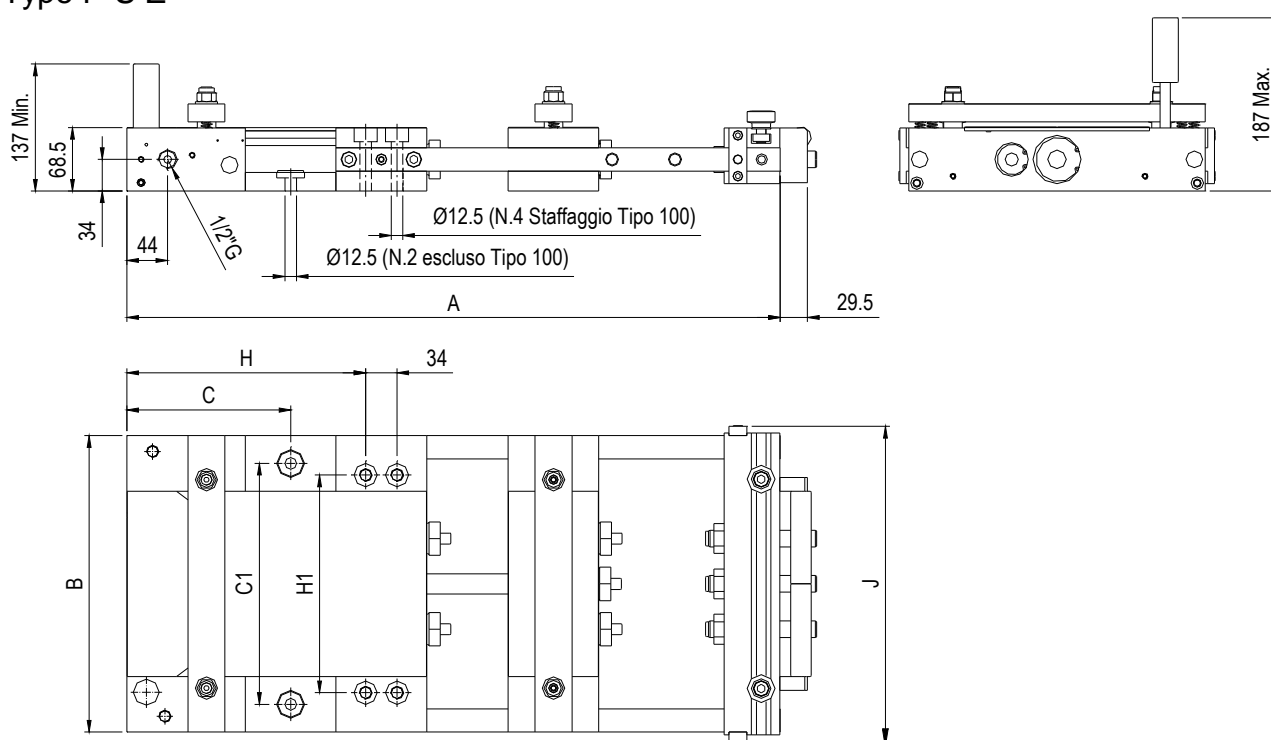


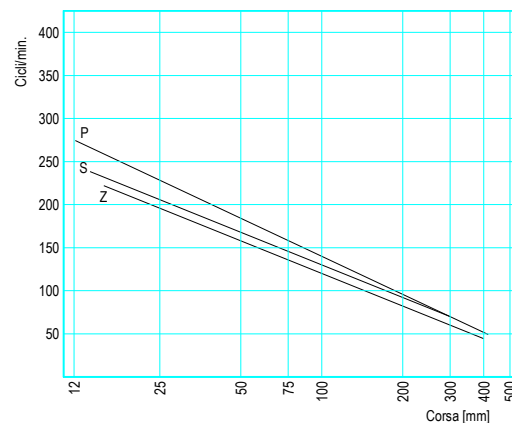
Type P-S-Z



Dimensional features

TYPE	A	B	C	C1	H	H1	J
P1	508	270	-	-	160	185	290
P2	706	270	177	210	258	185	290
P3	904	270	226	210	356	185	290
S1	508	320	-	-	160	235	340
S2	706	320	177	260	258	235	340
S3	904	320	226	260	356	235	340
Z1	508	420	-	-	160	335	440
Z2	706	420	177	360	258	335	440
Z3	904	420	226	360	356	335	440

Diagramma cicli/minuto



Technical features heavy duty series type P-S-Z

Type	Max strip width [mm]	Max. stroke max. [mm]	Strip thickness [mm]	Cycles min.	Fixed clamp pressure [kg]	Mobile clamp pressure [kg]	Traction power [kg]	Air consumption (liters/min.)	Weight[kg]
P1	155	100	3.8	140	280	604	108	184	32
P2	155	200	3.5	120	280	604	108	314	39
P3	155	300	3.0	70	280	604	108	275	46
S1	205	100	3.0	130	280	604	108	170	38
S2	205	200	3.0	110	280	604	108	288	45
S3	205	300	3.0	70	280	604	108	275	54
Z1	305	100	3.0	120	280	604	108	158	48
Z2	305	200	3.0	95	280	604	108	249	58
Z3	305	300	2.5	60	280	604	108	235	69