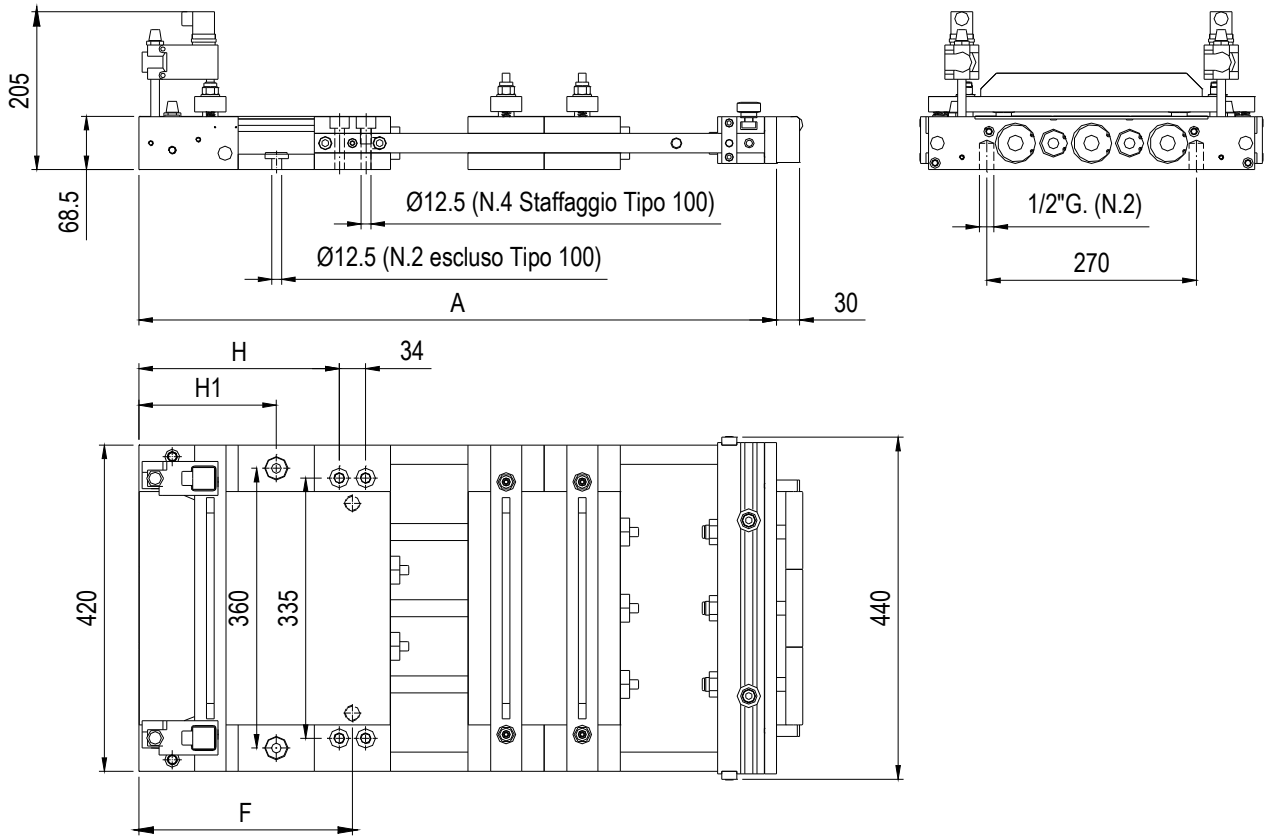
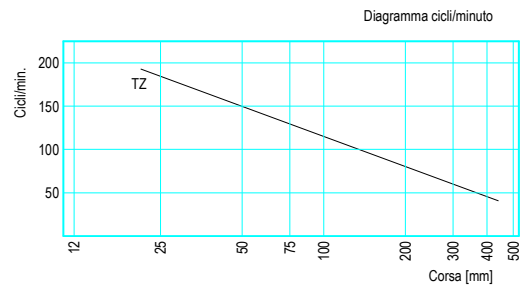


TYPE TZ



Dimensional features

TYPE	A	H1	H	F
TZ1	623	-	160	177
TZ2	821	177	258	275
TZ3	1019	226	356	373



Technical features Maxi series , type TZ

Type	Max strip width [mm]	Max. stroke max. [mm]	Strip thickness [mm]	Cycles min.	Fixed clamp pressure [kg]	Mobile clamp pressure [kg]	Traction power [kg]	Air consumption (liters/min.)	Weight[kg]
TZ1	305	100	4.5	115	280	1208	324	450	65
TZ2	305	200	4.0	80	280	1208	324	620	78
TZ3	305	300	3.5	60	280	1208	324	707	91