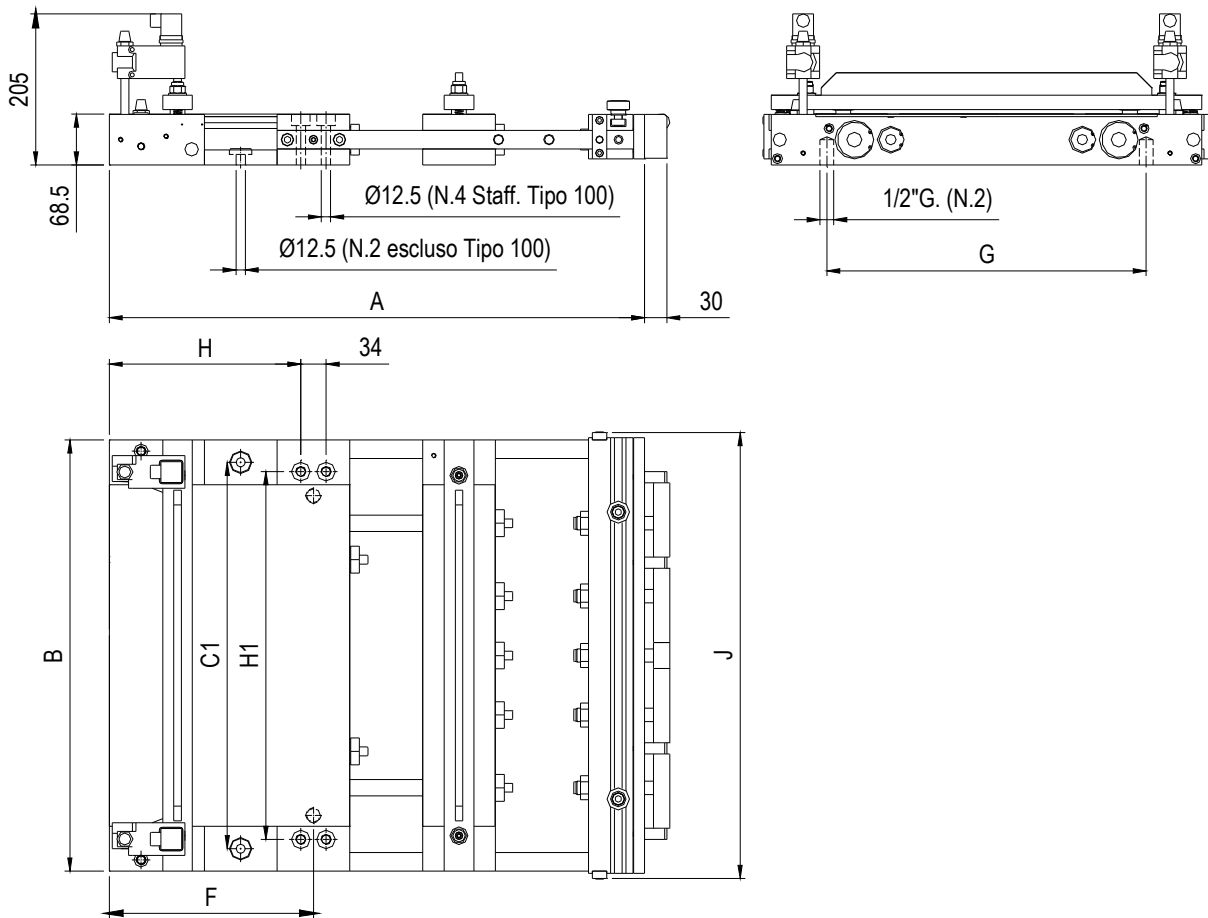
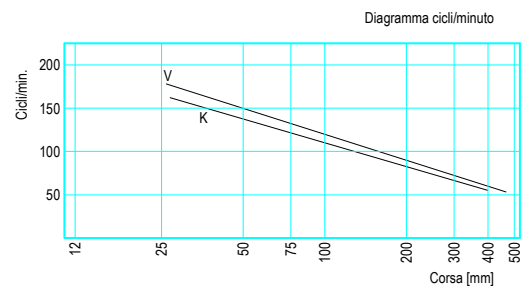


## TYPE V-K



### Dimensional features

TYPE	A	B	C	C1	H	H1	F	G	J
V1	523	580	-	-	160	495	177	430	600
V2	721	580	177	520	258	495	275	430	600
V3	919	580	226	520	356	495	373	430	600
V4	1117	580	275	520	454	495	471	430	600
K1	523	730	-	-	160	645	177	580	750
K2	721	730	177	670	258	645	275	580	750
K3	919	730	226	670	356	645	373	580	750
K4	1117	730	275	670	454	645	471	580	750



### Technical features heavy duty series type V-K

Type	Max strip width [mm]	Max. stroke max. [mm]	Strip thickness [mm]	Cycles min.	Fixed clamp pressure [kg]	Mobile clamp pressure [kg]	Traction power [kg]	Air consumption (liters/min.)	Weight[kg]
V1	460	100	3.0	120	280	604	216	314	101
V2	460	200	2.5	100	280	604	216	500	112
V3	460	300	2.0	80	280	604	216	620	123
V4	460	400	1.8	60	280	604	216	620	134
K1	610	100	2.5	110	280	604	216	288	116
K2	610	200	2.0	95	280	604	216	490	126
K3	610	300	1.8	75	280	604	216	580	139
K4	610	400	1.5	55	280	604	216	586	154