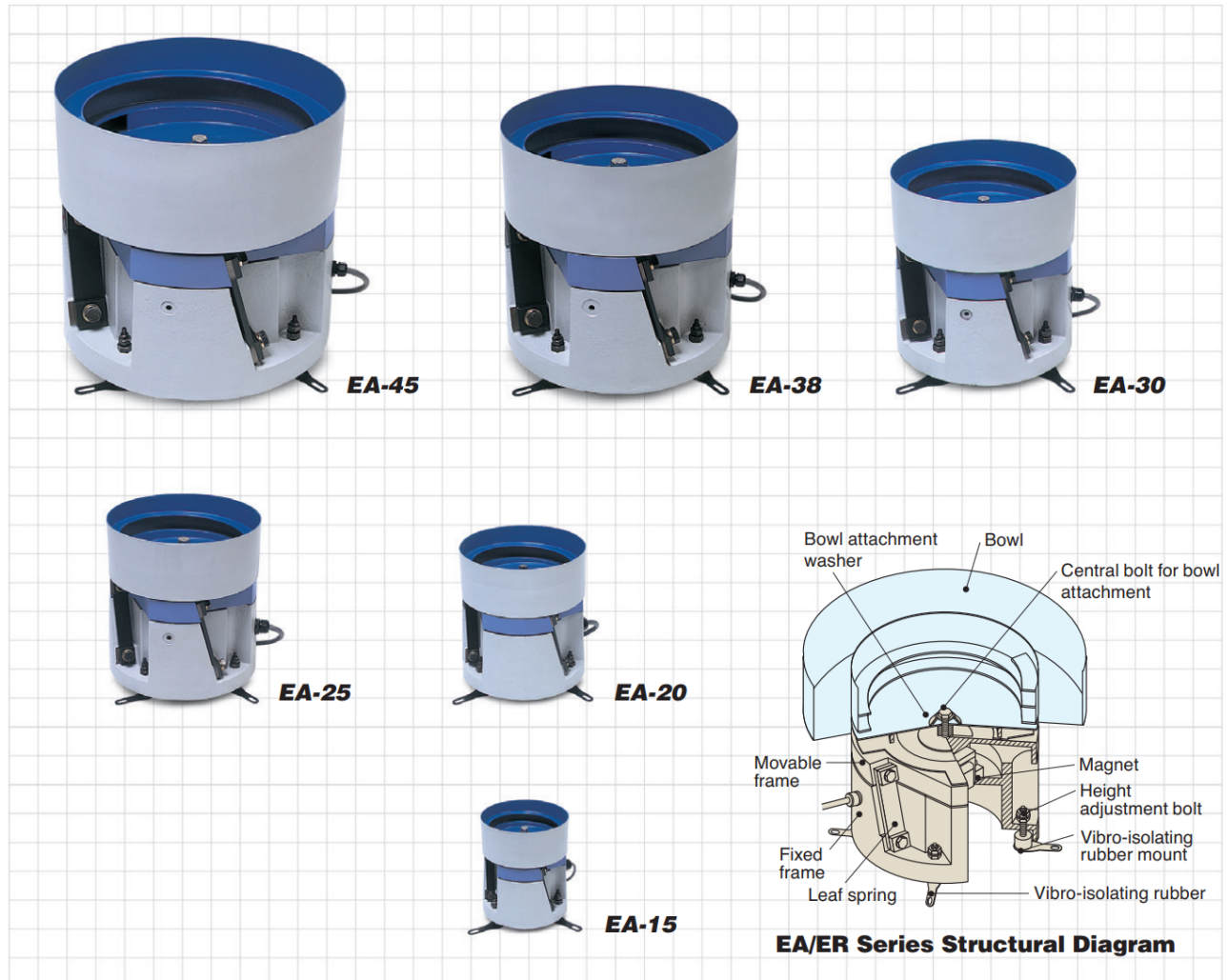


## For handling a wide range of very small, precision workpieces

With high vibration frequencies of 100 to 180 Hz and small amplitude of 0.6 mm, this series is ideal for very small (10 mm or less), high precision or ultra thin workpieces. Can accommodate bowls ranging from 150 to 700 mm in diameter for highly reliable conveyance.



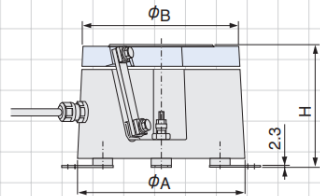
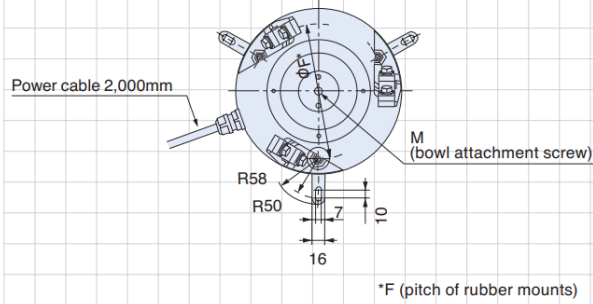
### Specifications

Model		EA-15	EA-20	EA-25	EA-30	EA-38	EA-45
Drive unit outer diameter	mm	φ160	φ210	φ260	φ310	φ390	φ460
Drive unit height	mm	130	155	190	220	260	280
Drive unit weight	kg	8.5	17	30	47	81	115
Leaf-spring attachment angle	degree	15					
Rated voltage	V	200 (*1)					
Rated current	A	0.4	0.8	1.5	2.0	2.5	3.0
Vibration frequency	Hz	100~180					
Unprocessed bowl diameter (cylindrical)	mm	150	200	250	300	375	450
Max. bowl diameter (cylindrical)	mm	250	330	420	500	600	700
Max. amplitude (periphery of standard cylindrical bowl)	mm	0.6					
Max. loaded weight (workpieces + bowl weight)	kg	2.3	4	8	12.5	17	26
Cross section area of power cable	mm <sup>2</sup>	0.75 x 3 cores				1.25 x 3 cores	
Compatible controllers	AC200V	C10-1VF/1VFEF			C10-3VF/3VFEF		
	AC100V	C10-1VF/1VFEF+C10-TR			C10-3VF/3VFEF+C10-TR		

Note \*1 With an AC100V power source, use C10-TR transformer (sold separately).

# Dimensions EA/ER Series

**EA-15/20**



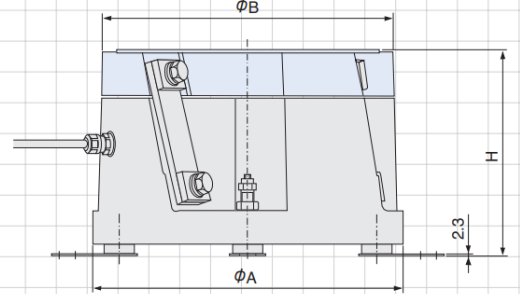
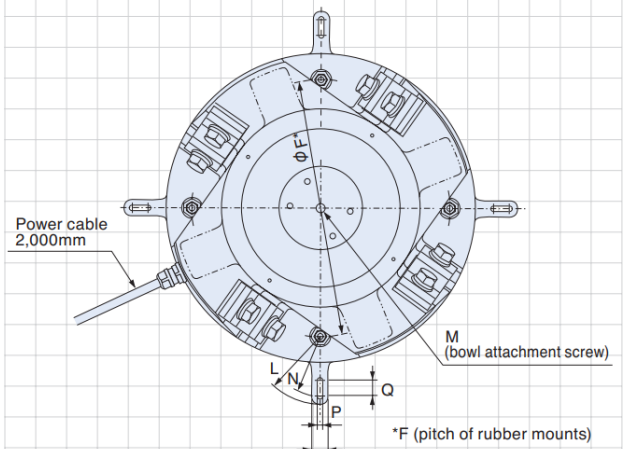
Mounts can be affixed in any desired alignment.

Unit: mm

Unit: mm

Model	H	$\phi A$	$\phi B$	M	$\phi F$
<b>EA-15</b>	130-133-136	160	150	M8	130
<b>EA-20</b>	152-155-158	210	200	M10	170

**EA-25/30/38/45**



Unit: mm

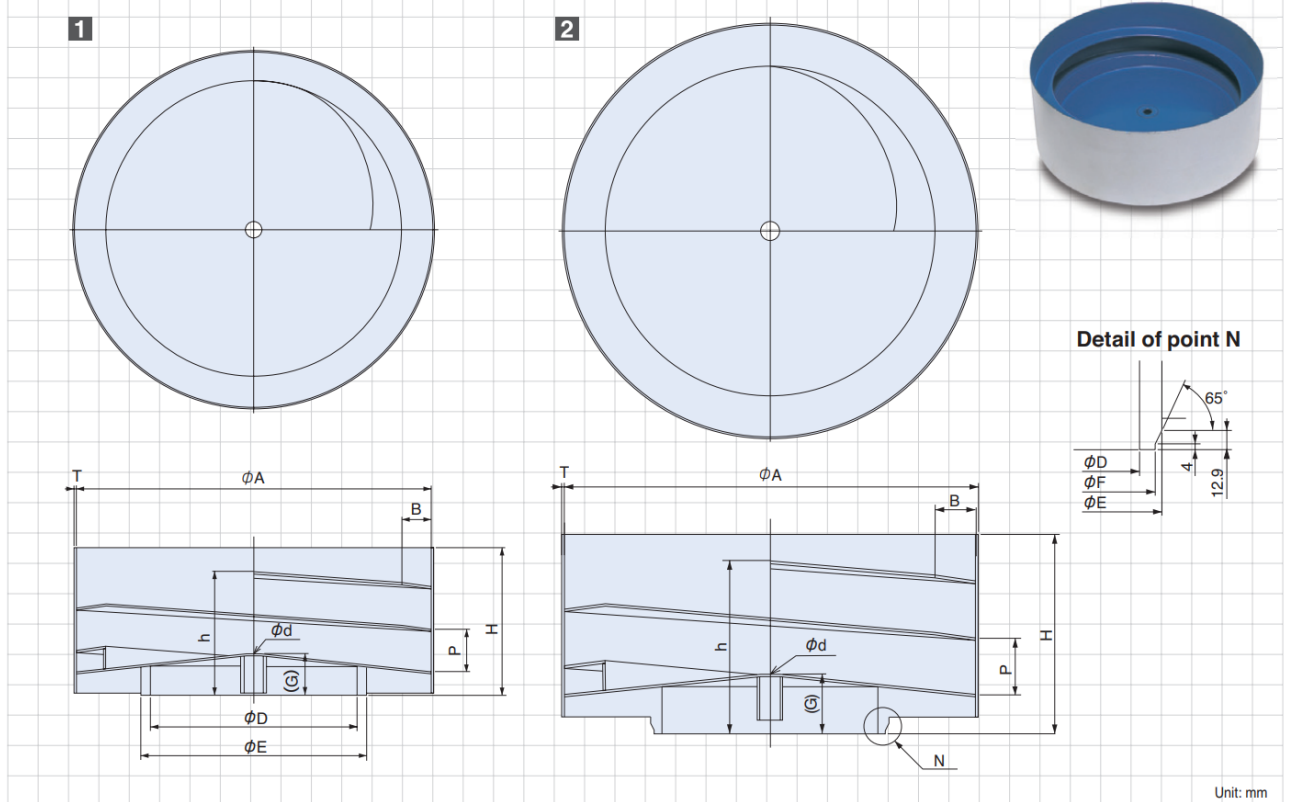
Unit: mm

Model	H	$\phi A$	$\phi B$	M	$\phi F$	L	N	O	P	Q
<b>EA-25</b>	187-190-193	260	250	M12	216	58	50	16	7	10
<b>EA-30</b>	215-220-225	310	300	M12	252	85	75	20	7	20
<b>EA-38</b>	255-260-265	390	375	M16	324	85	75	20	7	20
<b>EA-45</b>	275-280-285	460	450	M16	390	85	75	20	7	20

# Bowl Dimensions EA/ER/DMS Series

## Straight Wall Bowls

Track circuits: 2 · 1/4



Unit: mm

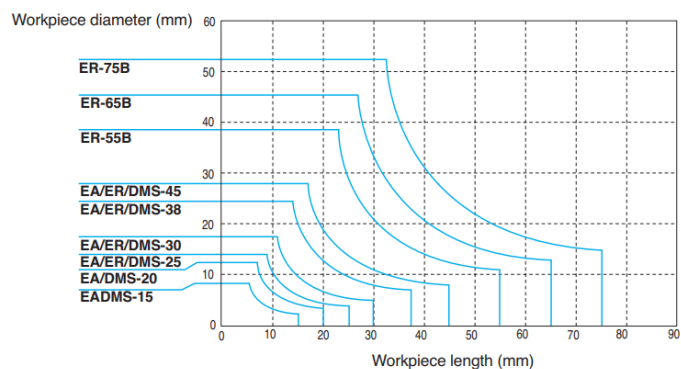
Model	φA	B	φD	φE	G	H	P	h	φd	T	Approx. Weight (kg)	Capacity (ℓ)
<b>EA/DMS-15</b>	150	12	73.1	89.1	22	70	18	56	8.2	1.5	1.1	0.1
<b>EA/DMS-20</b>	200	18	104	120	25	85	24	69	10.2	1.5	1.8	0.2
<b>EA/ER/DMS-25</b>	250	20	143	159	27	100	30	83	12.2	2	3.2	0.5
<b>EA/ER/DMS-30</b>	300	25	174.7	190.7	35	125	36	101	12.2	2	5.0	0.8
<b>EA/ER/DMS-38</b>	375	35	216	232	43	155	46	129	16.2	2	8.0	1.7
<b>EA/ER/DMS-45</b>	450	40	282.5	298.5	52	190	56	156	16.2	3	15.0	3.0

Unit: mm

Model	φA	B	φD	φE	φF	G	H	P	h	φd	T	Approx. Weight (kg)	Capacity (ℓ)
<b>ER-55B</b>	550	55	288.5	318.5	309.2	78	266	76	221	25	3	28	5
<b>ER-65B</b>	650	65	373	406.4	397.2	88	311	90	258	25	3	39	10
<b>ER-75B</b>	750	75	477.8	508	498.7	99	366	108	303	25	3	54	15

Notes 1) Bowls are made of stainless steel, and standard color is differ from color of pictures above. 2) Bowls available with clockwise or counter-clockwise orientation.  
3) Capacity varies according to the type of workpiece. \*When supplied unprocessed, neither inside nor outside has been surface-treated.

## Straight wall Bowl Selection Guide

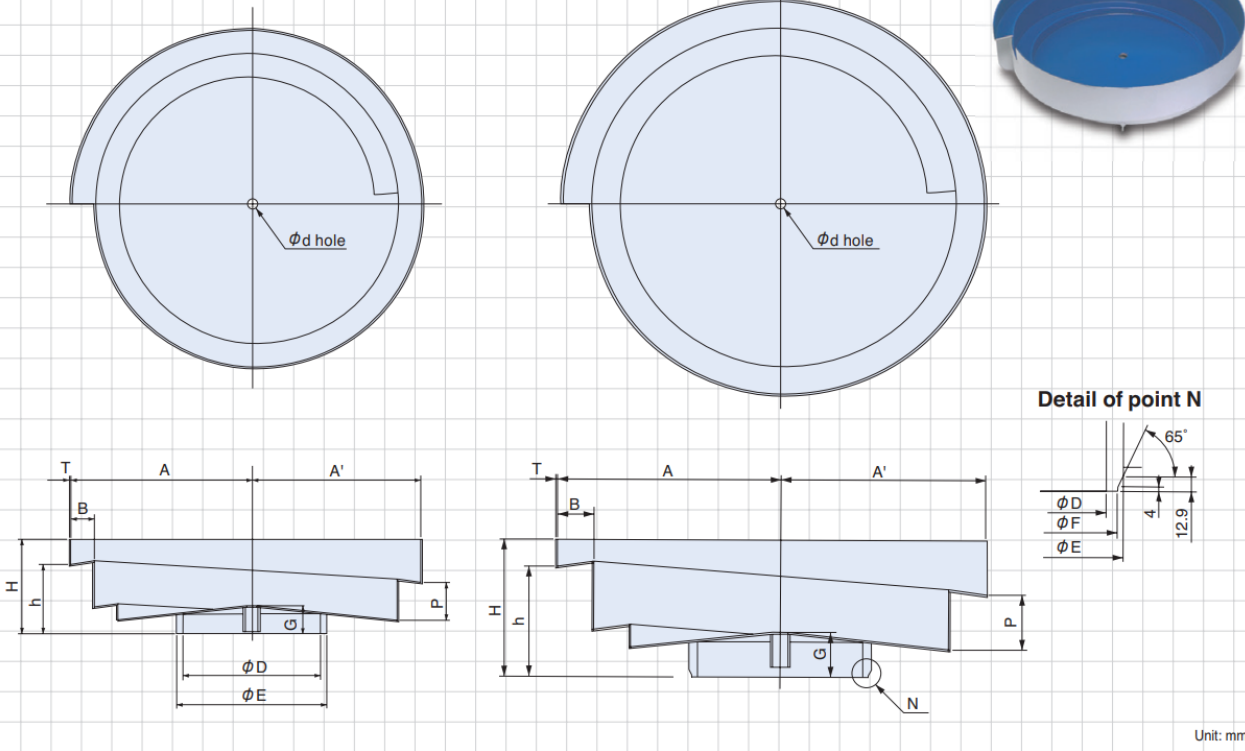


### Cascade Bowls

Track circuits: 1 · 1/2

1

2



Unit: mm

1

Unit: mm

Model	Dia. approx.	A	A'	B	H	h	P	φd	φD	φE	G	T	Approx. Weight (kg)	Capacity (ℓ)
<b>EA/DMS-15</b>	215	110	102.5	15	65	50	24	8.2	73.1	89.1	23	2	1.3	0.4
<b>EA/DMS-20</b>	280	145	135	20	80	59	30	10.2	104	120	26	2	2.2	0.8
<b>EA/ER/DMS-25</b>	350	180	167.5	25	95	70	38	12.2	143	159	28	2	3.3	1.6
<b>EA/ER/DMS-30</b>	450	230	215	30	120	88	48	12.2	174.7	190.7	36	2	5.4	3.5
<b>EA/ER/DMS-38</b>	540	280	260	40	150	109	58	16.2	216	232	45	2	8	6
<b>EA/ER/DMS-45</b>	650	335	310	50	185	135	72	16.2	282.5	298.5	54	3	16	10

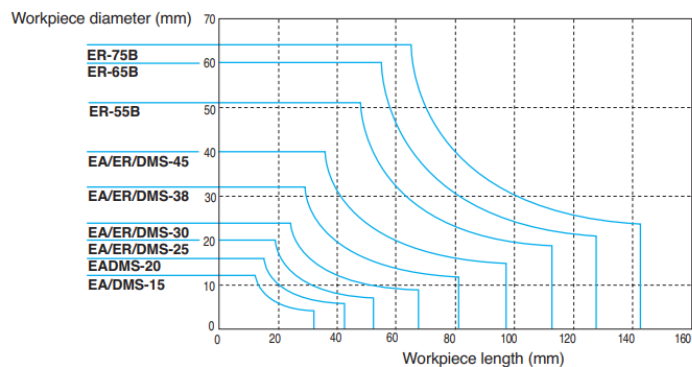
2

Unit: mm

Model	Dia. approx.	A	A'	B	H	h	P	φd	φD	φE	φF	G	T	Approx. Weight (kg)	Capacity (ℓ)
<b>ER-55B</b>	750	390	358	64	240	193	96	25	288.5	318.5	309.2	78	3	26	17
<b>ER-65B</b>	850	445	405	80	306	236	120	25	373	406.4	397.2	88	3	37	20
<b>ER-75B</b>	950	495	455	80	346	256	130	25	477.8	508	498.7	99	3	47	25

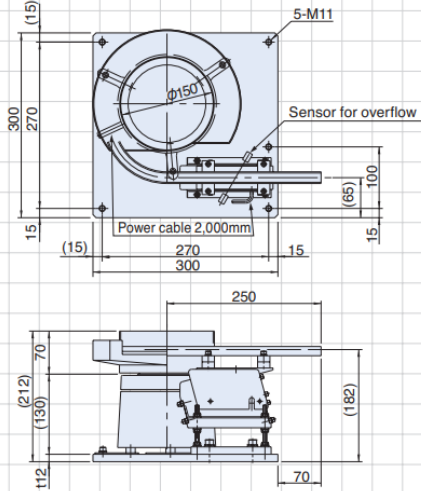
Notes 1) Bowls are made of stainless steel, and standard color is differ from color of pictures above. 2) Bowls available with clockwise or counter-clockwise orientation. 3) Capacity varies according to the type of workpiece. \*When supplied unprocessed, neither inside nor outside has been surface-treated.

### Cascade Bowl Selection Guide

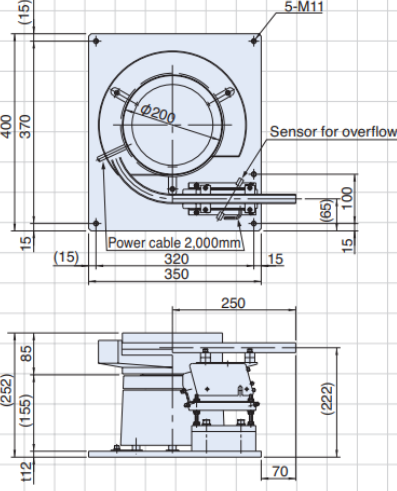


# Linear Feeder Combinations EA/ER/DMS Series

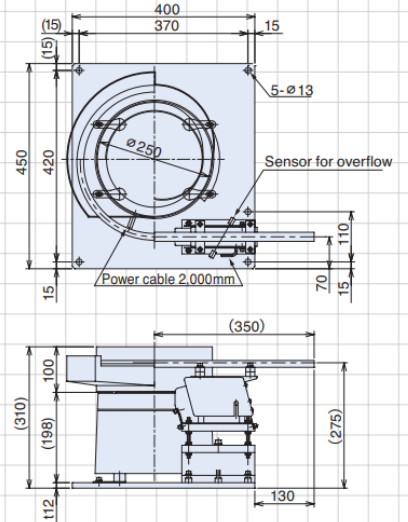
**1 EA/DMS-15+LFB-300**



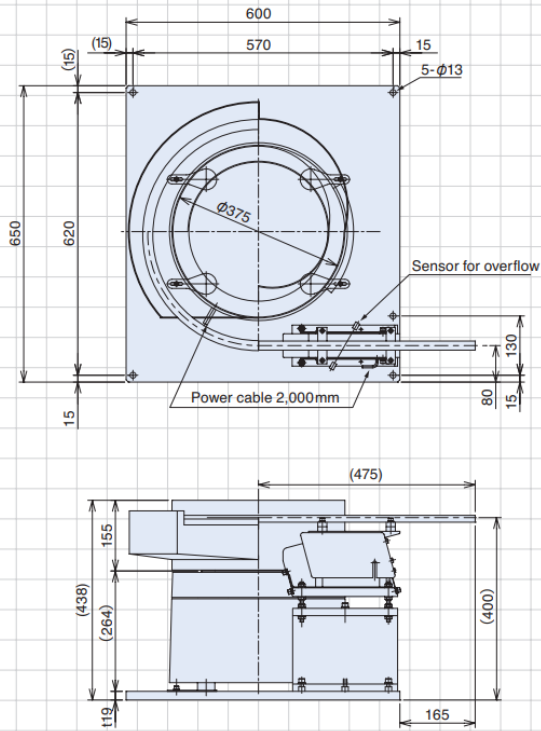
**2 EA/DMS-20+LFB-300**



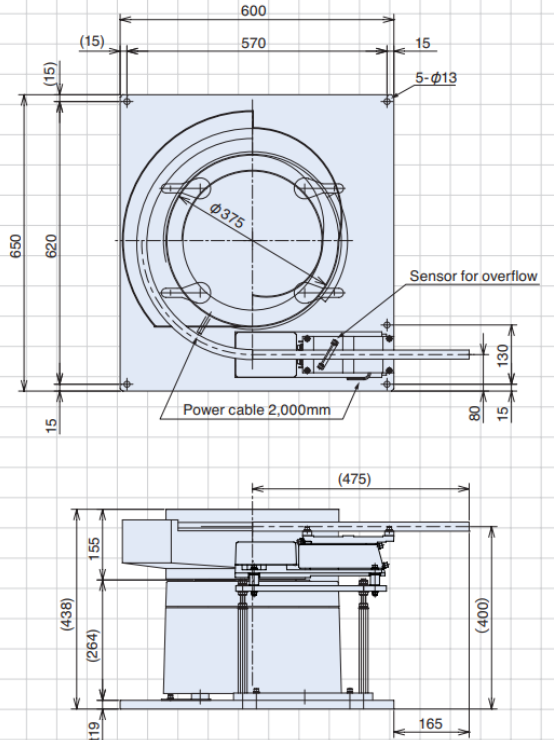
**3 EA/ER/DMS-25+LFB-400**



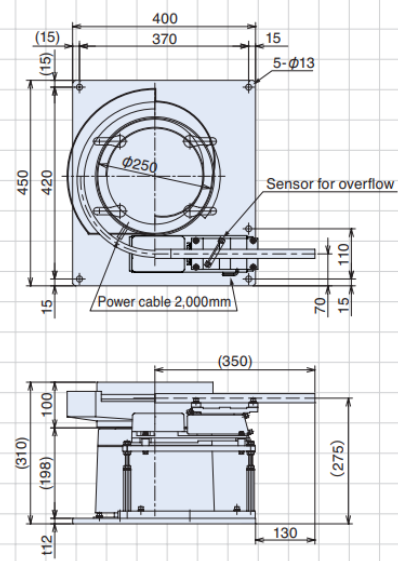
**7 EA/ER/DMS-38+LFB-550**



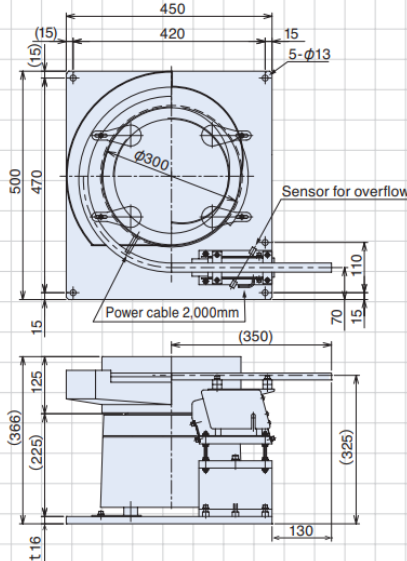
**8 EA/ER/DMS-38+LFG-750**



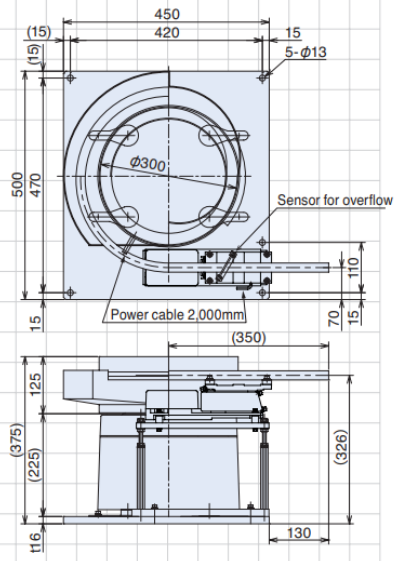
**4 EA/ER/DMS-25+LFG-600**



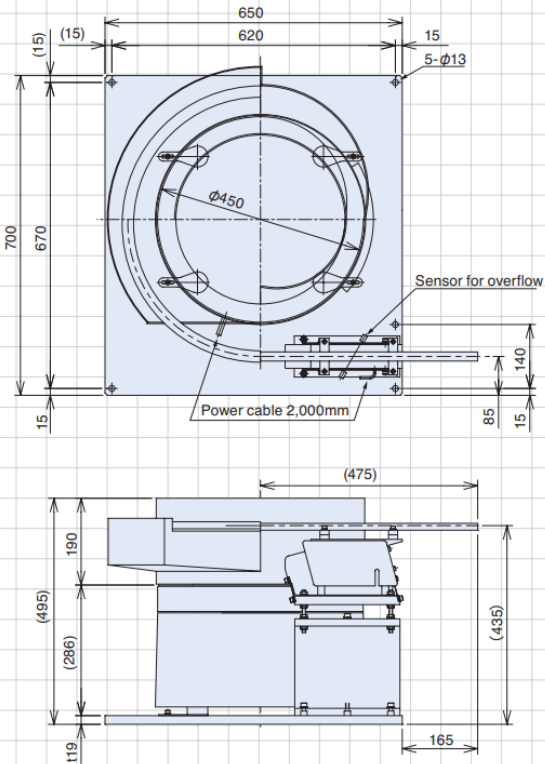
**5 EA/ER/DMS-30+LFB-400**



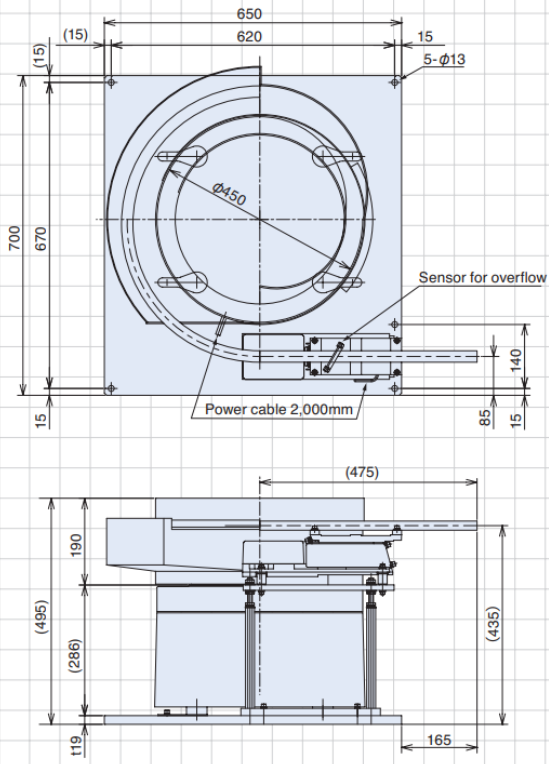
**6 EA/ER/DMS-30+LFG-600**



**9 EA/ER/DMS-45+LFB-550**



**10 EA/ER/DMS-45+LFG-750**



Unit: mm