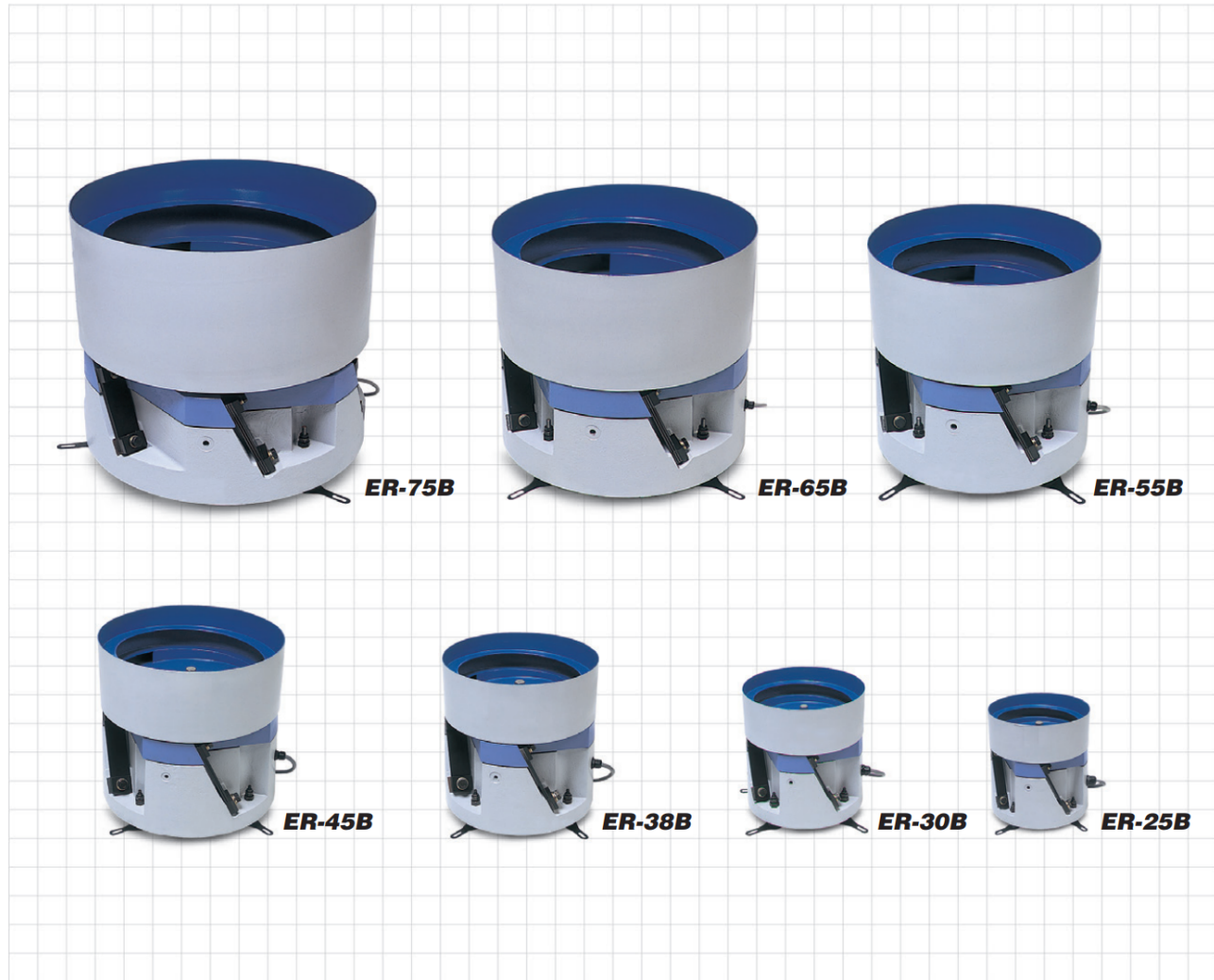


Steady delivery of workpieces of all sizes

With low vibration frequencies of 50 to 90Hz and a large amplitude of 1.2 mm, this series is suited to workpieces from 10 mm up in size.

Bowl diameters from 250 to 1100 mm can be accommodated, to give powerful feeder performance.



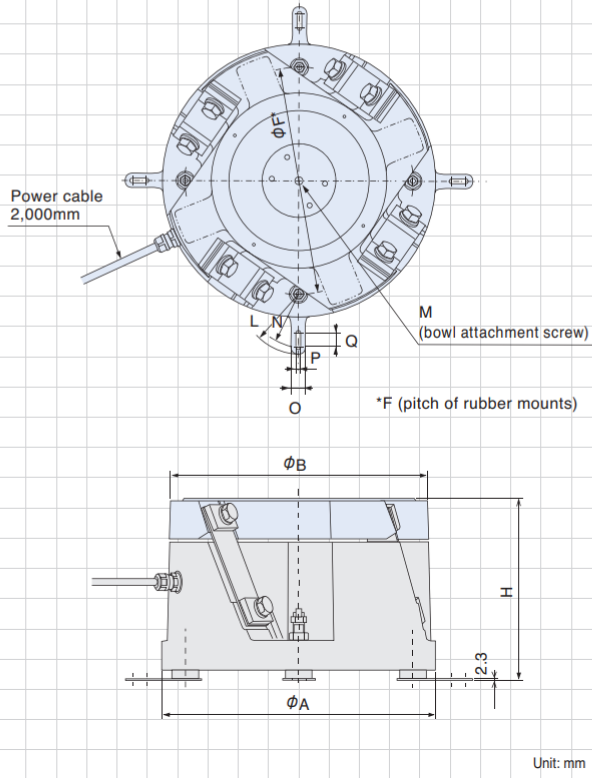
Specifications

Model		ER-25B	ER-30B	ER-38B	ER-45B	ER-55B	ER-65B	ER-75B	
Drive unit outer diameter	mm	φ 260	φ 310	φ 390	φ 460	φ 560	φ 660	φ 760	
Drive unit height	mm	198	225	264	286	321	321	321	
Drive unit weight	kg	30	47	81	115	160	200	260	
Leaf-spring attachment angle	degree	20							
Rated voltage	V	200 (*1)							
Rated current	A	1.0	1.5	2.0	2.5	5.0	5.0	5.0	
Vibration frequency	Hz	50~90							
Unprocessed bowl diameter (cylindrical)	mm	250	300	375	450	550	650	750	
Max. bowl diameter (cylindrical)	mm	420	500	600	700	830	980	1130	
Max. amplitude (periphery of standard cylindrical bowl)	mm	1.2					1.4		
Max. loaded weight (workpieces + bowl weight)	kg	8	12.5	17	26	70	85	125	
Cross section area of power cable	mm ²	0.75 x 3cores		1.25 x 3cores		2.0 x 3cores			
Compatible controllers (*2)	AC200V	C10-1VF/1VFEF		C10-3VF/3VFEF		C10-5VF/5VFEF			
	AC100V	*2	C10-3VF/3VFEF+C10-TR				—		

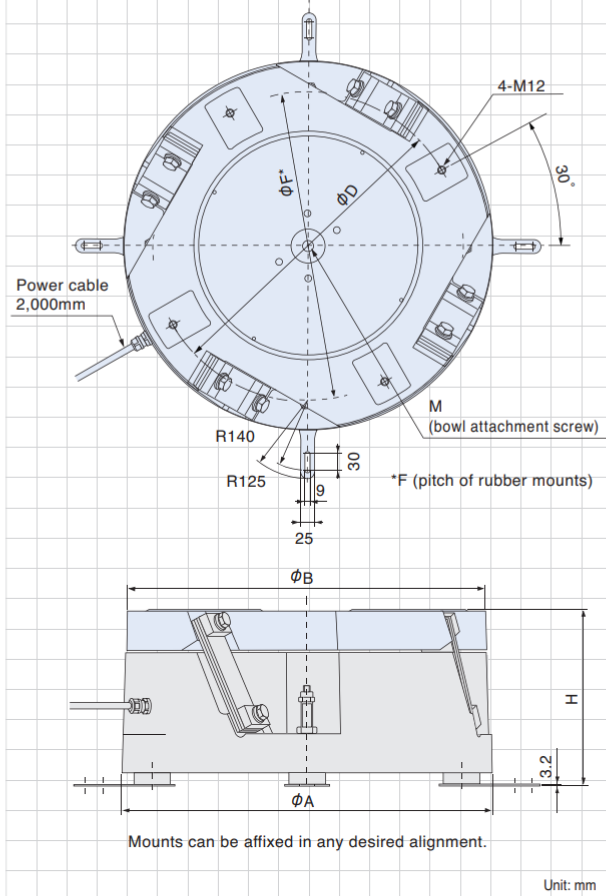
Notes *1 With an AC100V power source, use C10-TR transformer (sold separately).

*2 C10-1VF/1VFEF+C10-TR

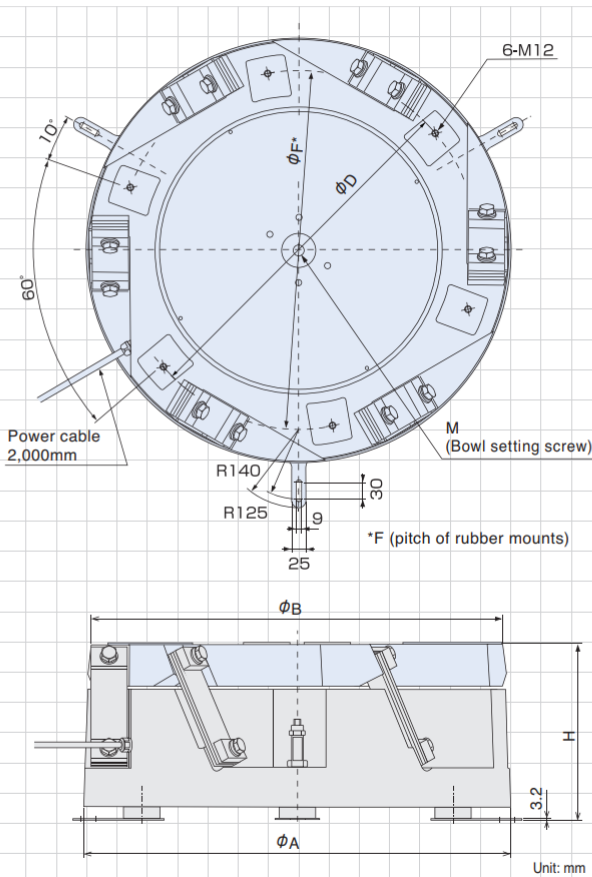
ER-25B/30B/38B/45B



ER-55B/65B



ER-75B



Unit: mm

Model	H	ϕA	ϕB	M	ϕF	L	N	O	P	Q
ER-25B	194-198-202	260	250	M12	216	58	50	16	7	10
ER-30B	218-225-232	310	300	M12	252	85	75	20	7	20
ER-38B	257-264-271	390	375	M16	324	85	75	20	7	20
ER-45B	280-286-292	460	450	M16	390	85	75	20	7	20

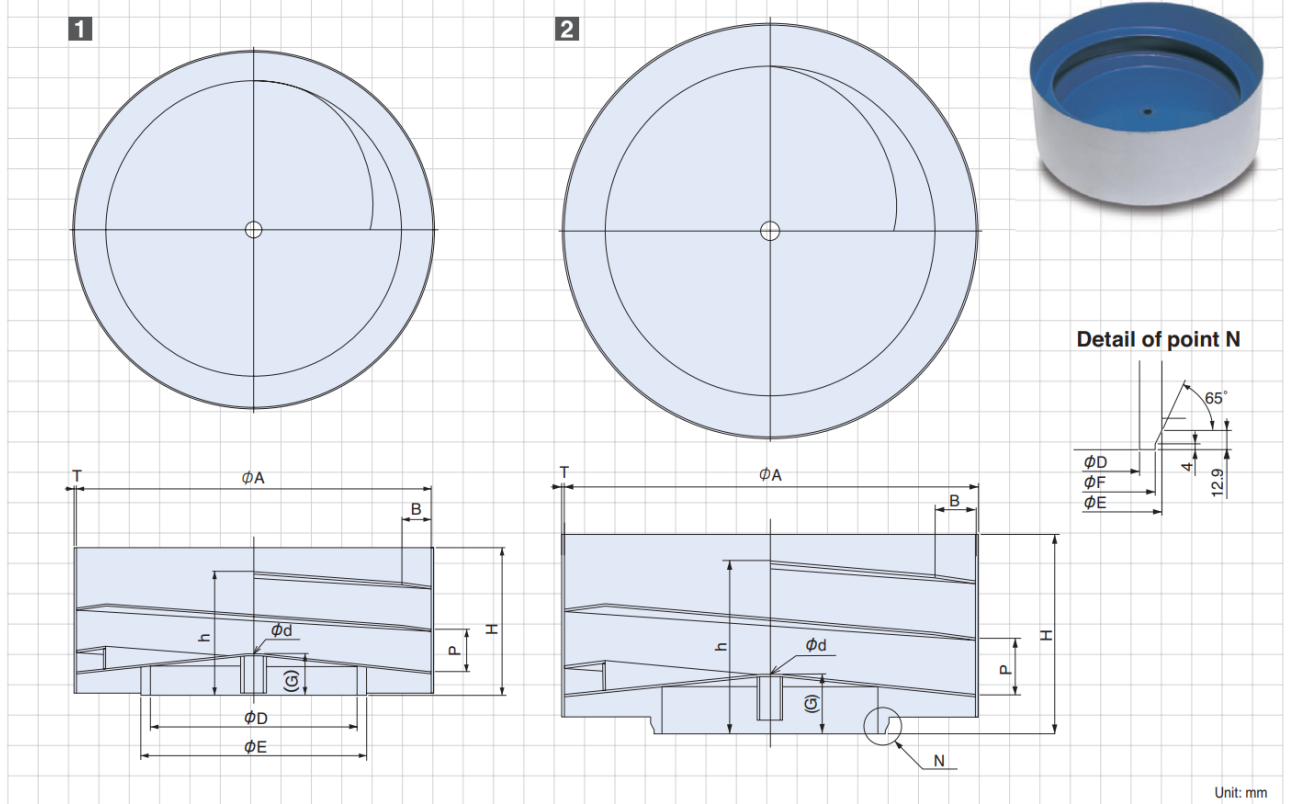
Unit: mm

Model	H	ϕA	ϕB	ϕD	M	ϕF
ER-55B	312-321-330	560	550	460	M20	450
ER-65B	312-321-330	660	650	580	M20	550
ER-75B	312-321-330	760	750	640	M20	640

Bowl Dimensions EA/ER/DMS Series

Straight Wall Bowls

Track circuits: 2 · 1/4



1

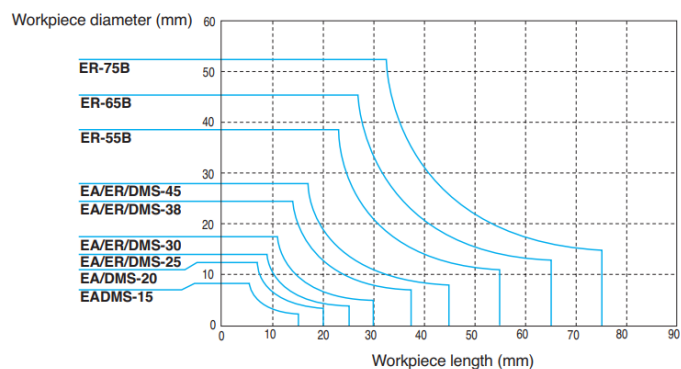
Model	ϕA	B	ϕD	ϕE	G	H	P	h	ϕd	T	Approx. Weight (kg)	Capacity (l)
EA/DMS-15	150	12	73.1	89.1	22	70	18	56	8.2	1.5	1.1	0.1
EA/DMS-20	200	18	104	120	25	85	24	69	10.2	1.5	1.8	0.2
EA/ER/DMS-25	250	20	143	159	27	100	30	83	12.2	2	3.2	0.5
EA/ER/DMS-30	300	25	174.7	190.7	35	125	36	101	12.2	2	5.0	0.8
EA/ER/DMS-38	375	35	216	232	43	155	46	129	16.2	2	8.0	1.7
EA/ER/DMS-45	450	40	282.5	298.5	52	190	56	156	16.2	3	15.0	3.0

2

Model	ϕA	B	ϕD	ϕE	ϕF	G	H	P	h	ϕd	T	Approx. Weight (kg)	Capacity (l)
ER-55B	550	55	288.5	318.5	309.2	78	266	76	221	25	3	28	5
ER-65B	650	65	373	406.4	397.2	88	311	90	258	25	3	39	10
ER-75B	750	75	477.8	508	498.7	99	366	108	303	25	3	54	15

Notes 1) Bowls are made of stainless steel, and standard color is differ from color of pictures above. 2) Bowls available with clockwise or counter-clockwise orientation.
3) Capacity varies according to the type of workpiece. *When supplied unprocessed, neither inside nor outside has been surface-treated.

Straight wall Bowl Selection Guide

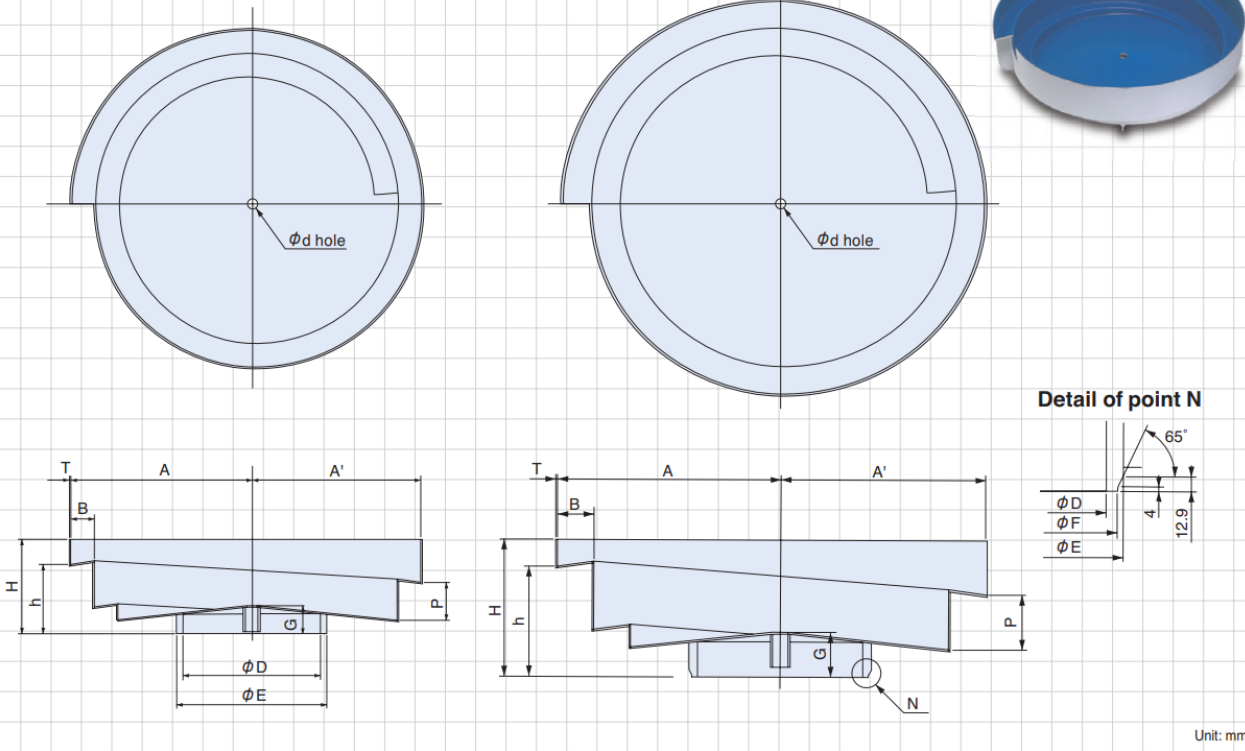


Cascade Bowls

Track circuits: 1 · 1/2

1

2



Unit: mm

1

Unit: mm

Model	Dia. approx.	A	A'	B	H	h	P	φd	φD	φE	G	T	Approx. Weight (kg)	Capacity (ℓ)
EA/DMS-15	215	110	102.5	15	65	50	24	8.2	73.1	89.1	23	2	1.3	0.4
EA/DMS-20	280	145	135	20	80	59	30	10.2	104	120	26	2	2.2	0.8
EA/ER/DMS-25	350	180	167.5	25	95	70	38	12.2	143	159	28	2	3.3	1.6
EA/ER/DMS-30	450	230	215	30	120	88	48	12.2	174.7	190.7	36	2	5.4	3.5
EA/ER/DMS-38	540	280	260	40	150	109	58	16.2	216	232	45	2	8	6
EA/ER/DMS-45	650	335	310	50	185	135	72	16.2	282.5	298.5	54	3	16	10

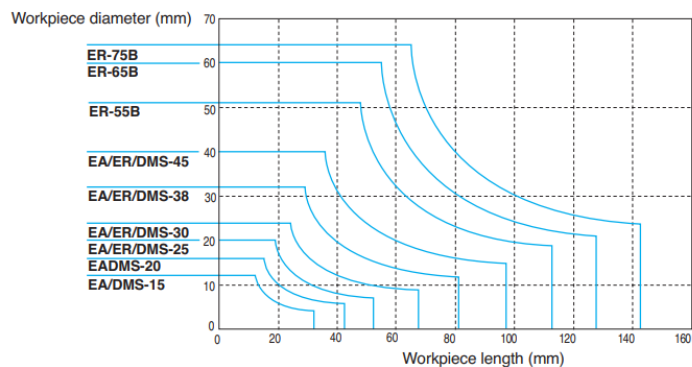
2

Unit: mm

Model	Dia. approx.	A	A'	B	H	h	P	φd	φD	φE	φF	G	T	Approx. Weight (kg)	Capacity (ℓ)
ER-55B	750	390	358	64	240	193	96	25	288.5	318.5	309.2	78	3	26	17
ER-65B	850	445	405	80	306	236	120	25	373	406.4	397.2	88	3	37	20
ER-75B	950	495	455	80	346	256	130	25	477.8	508	498.7	99	3	47	25

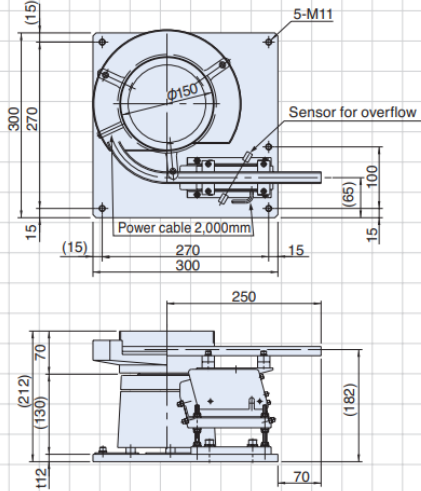
Notes 1) Bowls are made of stainless steel, and standard color is differ from color of pictures above. 2) Bowls available with clockwise or counter-clockwise orientation. 3) Capacity varies according to the type of workpiece. *When supplied unprocessed, neither inside nor outside has been surface-treated.

Cascade Bowl Selection Guide

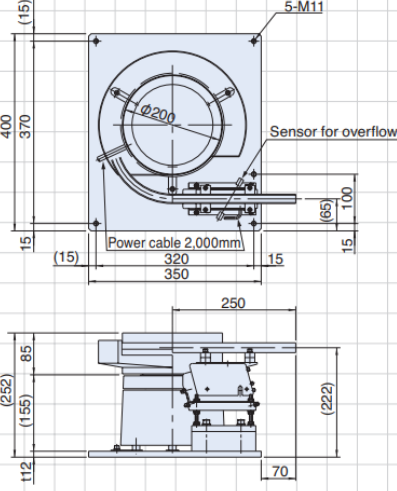


Linear Feeder Combinations EA/ER/DMS Series

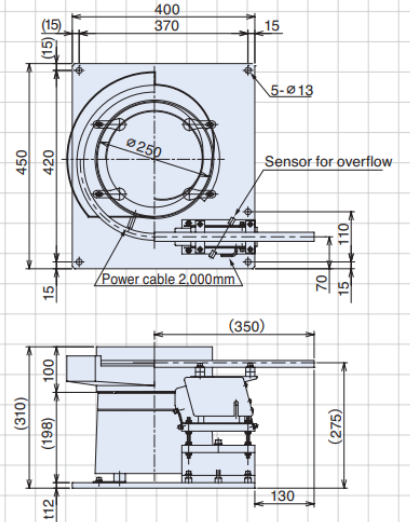
1 EA/DMS-15+LFB-300



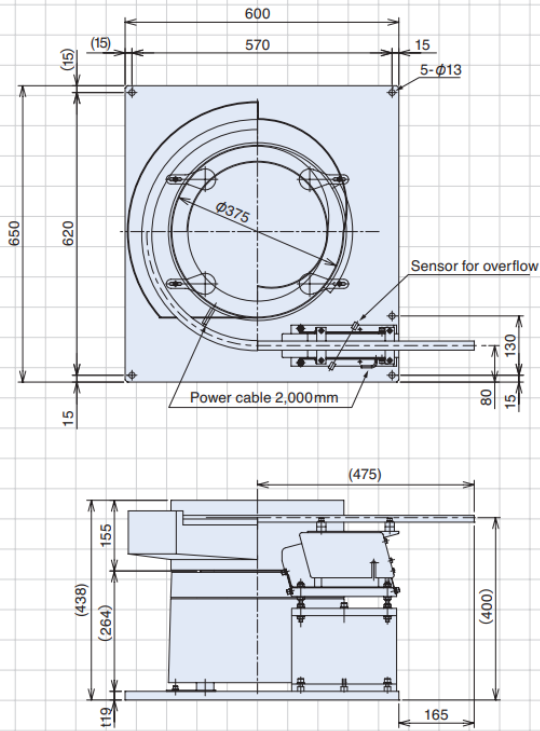
2 EA/DMS-20+LFB-300



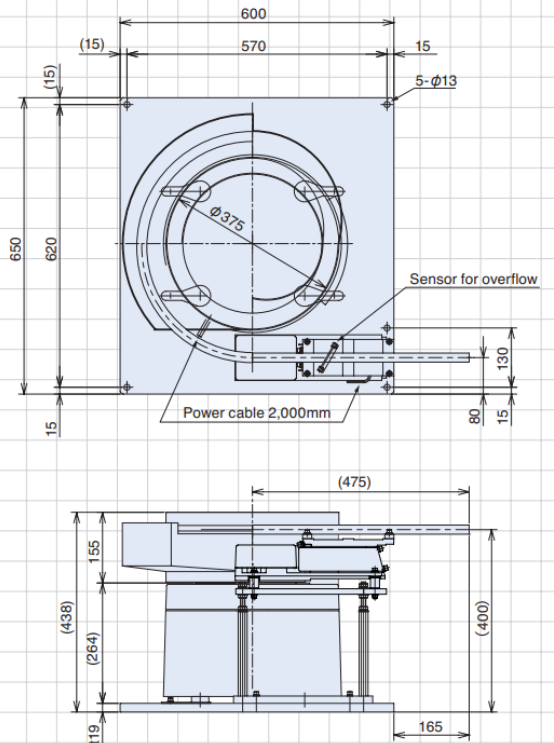
3 EA/ER/DMS-25+LFB-400



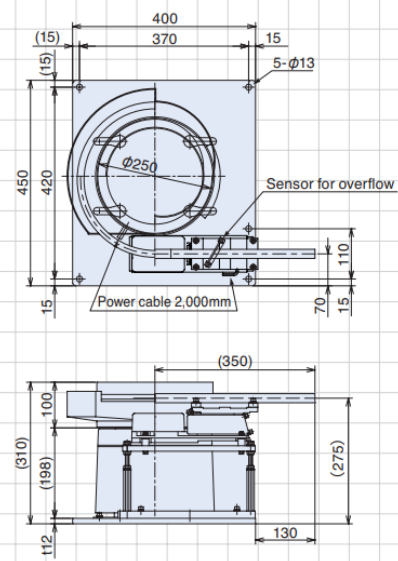
7 EA/ER/DMS-38+LFB-550



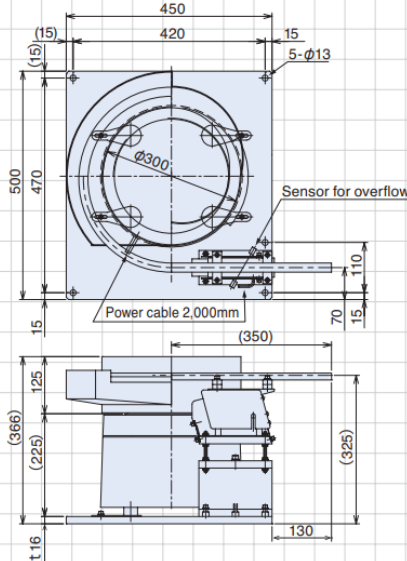
8 EA/ER/DMS-38+LFG-750



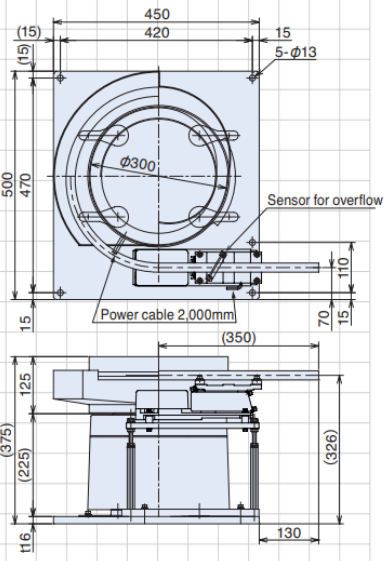
4 EA/ER/DMS-25+LFG-600



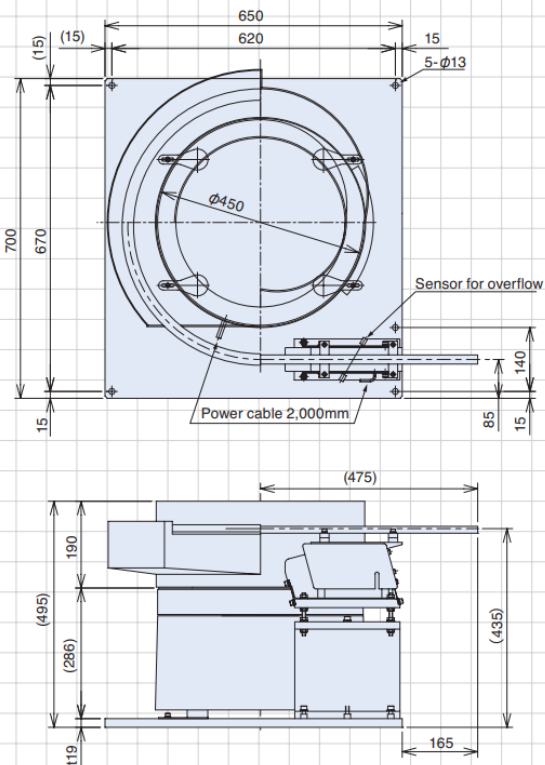
5 EA/ER/DMS-30+LFB-400



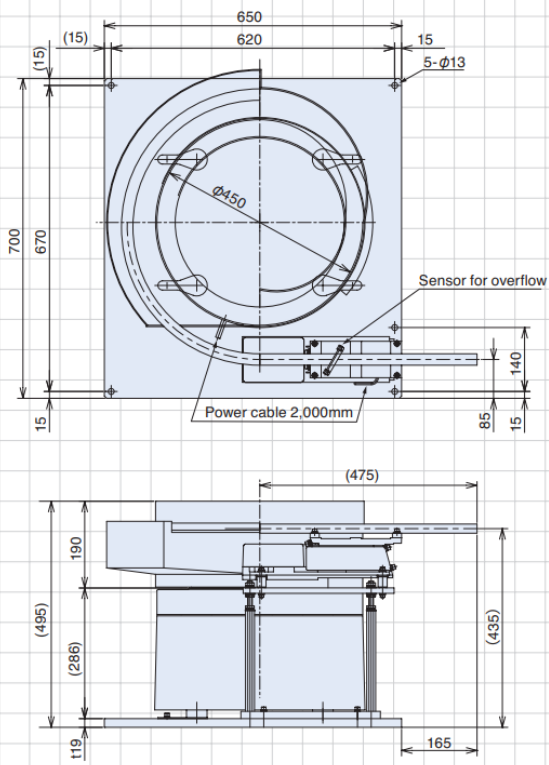
6 EA/ER/DMS-30+LFG-600



9 EA/ER/DMS-45+LFB-550



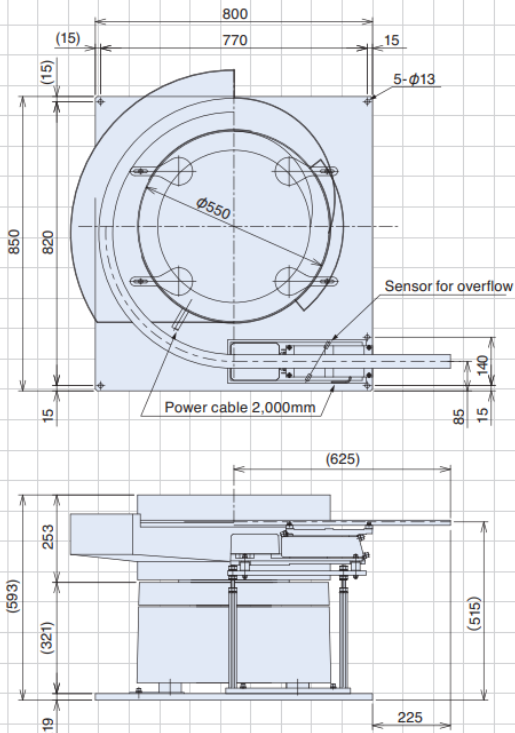
10 EA/ER/DMS-45+LFG-750



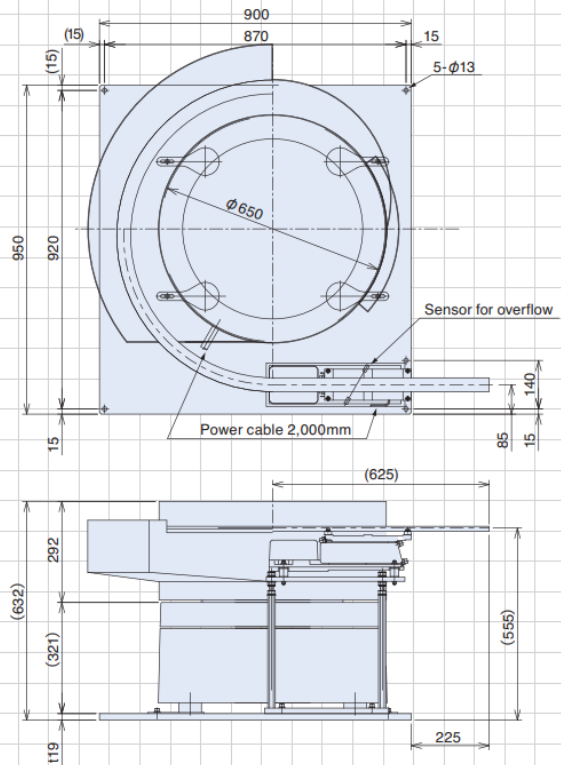
Unit: mm

Linear Feeder Combinations ER Series

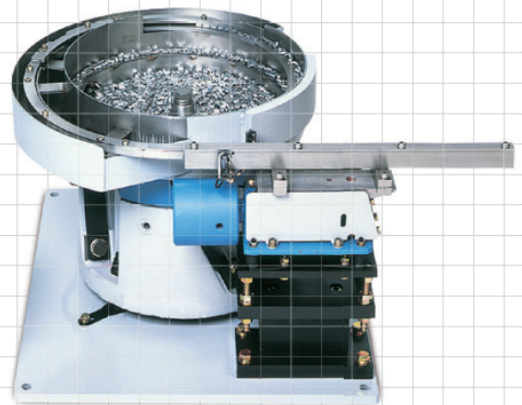
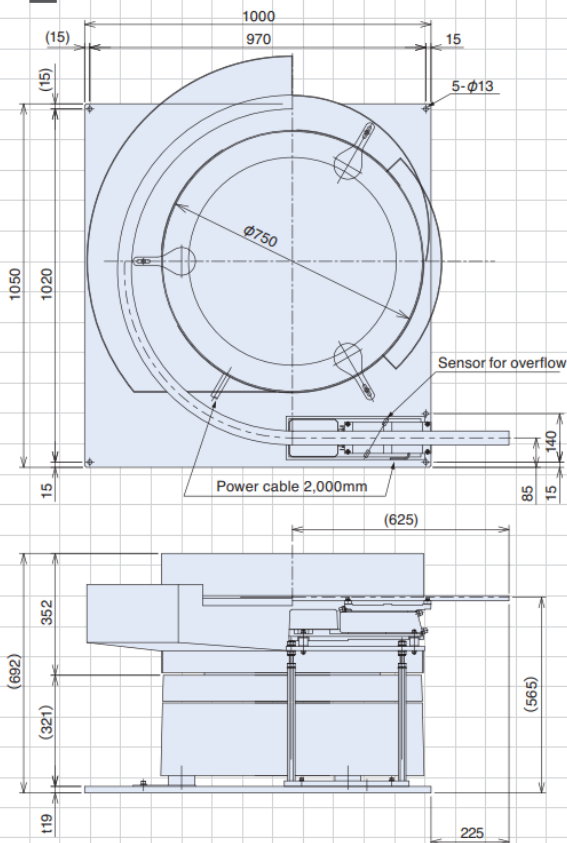
11 ER-55B+LFG-900



12 ER-65B+LFG-900



13 ER-75B+LFG-900



Parts Feeder	Linear Feeder Model					
	Leaf-spring vibro-isolating			Rubber-mount vibro-isolating		
	LFB-300	LFB-400	LFB-550	LFG-600	LFG-750	LFG-900
EA/DMS15	1					
EA/DMS-20	2					
EA/ER/DMS-25		3		4		
EA/ER/DMS-30		5		6		
EA/ER/DMS-38			7		8	
EA/ER/DMS-45			9		10	
ER-55B						11
ER-65B						12
ER-75B						13

Notes:
All diagrams above show straight wall bowls, however combinations are also possible with track-stepped bowls. (Only bowl diameter and chute exit height vary; all other dimensions are the same for both types of bowl)
A wide range of combinations is possible, depending on the type of workpiece. We are happy to discuss customers' individual requirements.

Unit: mm