

# CONVEYOR SYSTEMS



 **AUTOLINE**

ROBOTICS • AUTOMATION • CONVEYORS



## We Are The Robotic, Automation and Conveyor Experts

Autoline began over 30 years ago selling press feeder and bowl feeding solutions to the manufacturing industry. As we grew, we introduced New Zealand to Aluminium T-Slot Extrusion and used the aluminium profile to build conveyors and automation systems.

We continued to expand and established ourselves as New Zealand's leading automation company, 'Conveying Excellence' in what we designed, manufactured and our customer experience.

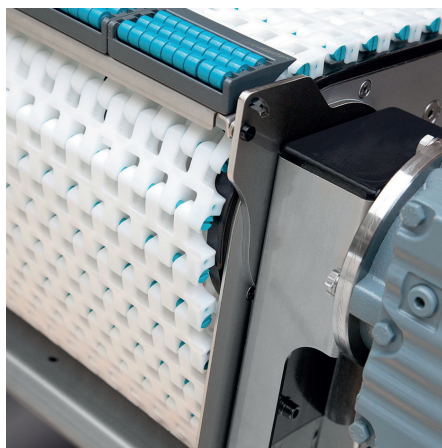
With a progressive development approach to bringing the very best of automation to New Zealand industries, we branched out into robotics with the acquisition of Carbines Engineering, New Zealand's leading robotics integrator with over 35 years of experience in the industry. Today we continue to lead as the Robotic, Automation and Conveyor Experts, bringing the latest technology and innovations to New Zealand.

## Autoline Conveyor Systems and Solutions

We build a wide range of customised conveyor systems to suit your industry and work environment, including belt, roller, stainless, modular and speciality conveyors. We also incorporate new innovative robotic equipment into existing conveyor systems to improve productivity and capability of existing systems.

## Industries We Serve

**Engineering • Forestry • Paper • Food • Manufacturing • Machinery • Warehousing**  
**• Logistics • Metal Products • Pharmaceutical • Plastic**





# AluPro Belt Conveyors

Belt conveyors are used to transport materials in a straight line or through changes in elevation or direction in a production line. Autoline provides a wide range of belt conveyor systems, including flat, modular, standard and aluminium belt conveyors to suit many different applications.

We build a wide range of customised conveyor systems to suit your industry and work environment, including belt, roller, stainless, modular and speciality conveyors. Our belt conveyors are constructed from t-slot aluminium extrusion making them the most compact and modular designed conveyor in the industry. The belt conveyors are quick to install and can be easily modified at any time, making the attachments of guide rails, legs, sensors, and brackets simple.

View AluPro  
Conveyors Online

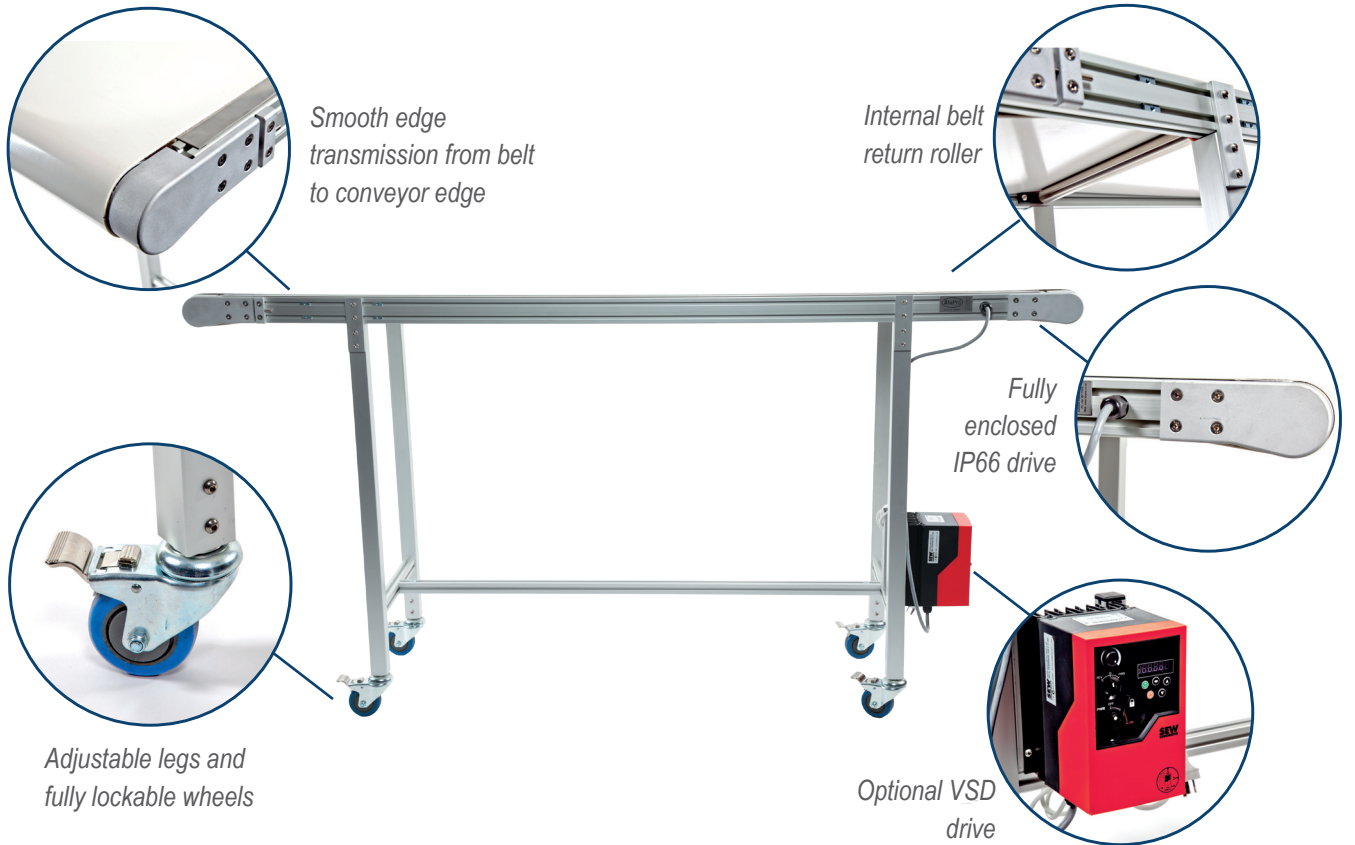


## Key Features:

- **Safe** - Belt runs to the edge to protect operators from potential injury and pinch points.
- **Compact** - Internal or external drives.
- **Versatile** - Constructed from aluminium T-slot extrusion makes a flexible and modular construction that can be easily modified at any time.
- **Reliable** - Simple 4 point adjustment for belt tension with drive alignment hidden for more reliable operation.
- **Cost-Effective** - Due to our compact and modular design, our conveyors are cost-effective solutions.
- **Range** - Standard widths of 100mm-1200mm and lengths from 250mm - 12000mm plus.



## AluPro Features



# Easy Conveyors

**easy**  
...CONVEYORS

Easy Conveyors have five basic types of aluminium conveyors that can be configured and customised to suit your needs. Conveyors can be configured through Easy Conveyor's online configuration and complete assemblies and full CAD parts are available in major CAD formats. This simplifies the design process and makes Easy Conveyors your simple solution for your conveying needs.

There are multiple conveyor tops to suit all applications;

- EBS Belt Conveyors
- ETS Table Top Conveyors
- EMBS Mat Top Conveyors
- EMCS Mat Top Conveyors
- ERA Roller Conveyors

View Easy  
Conveyors Online



## Key Features:

- Available in stainless steel and aluminium.
- Fully modular construction.
- Economic, space saving and flexible system.
- Future proof; changes and additions are easy to make at any time.
- Simple to install and maintain with the use of simple handheld tools.

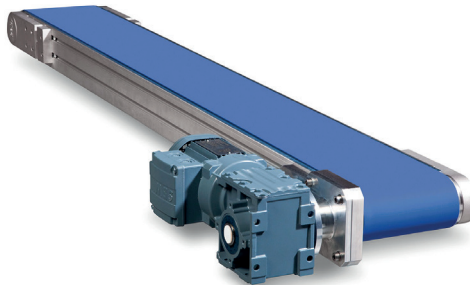


## EBS Belt Conveyors

The EBS40 is a belt conveyor for light applications up to a weight of 75kg, and widths available from 100 to 600mm.

The EBS80 is a belt conveyor for medium duty applications up to a weight of 150kg and widths available from 200 to 1200mm.

Their modular design makes flexible use possible so that you can efficiently adapt, expand or adjust your current system to different types of machine and equipment designs.



## ETS Table Top Conveyors

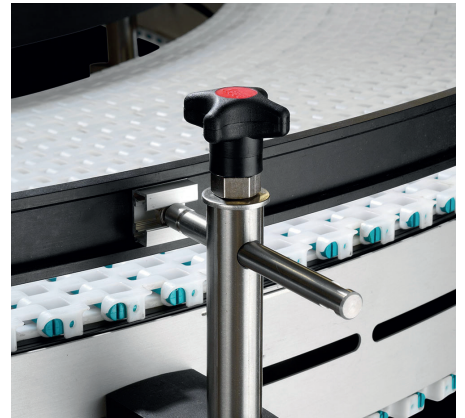
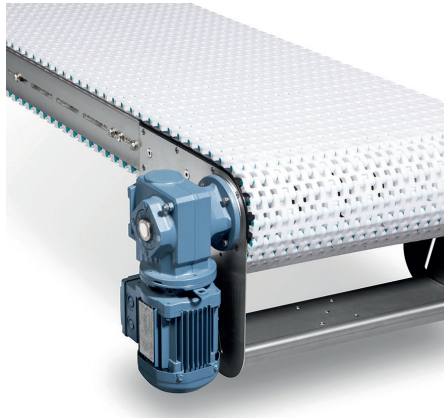
Table top systems are based on a close-fitting, multiflex plastic chain conveyor that can run both horizontally and vertically. The basic chain conveyor type has a width that ranges from 80 to 200 mm and a length of up to 30m. The supporting frame is based on aluminium anodised or stainless-steel profiles and the chain is made of white polyacetal material, with or without a friction top.





## EMBS Mat Top Conveyors

Open mat top systems are flexible, cost-effective solutions, specially designed for transporting large and bulky products. The systems are available in widths from 255 to 510 mm, with or without a friction top, and the available standard configurations include straight L, S or C shaped constructions. The wide conveyor system can be supplied as components, modules or as a complete system.



## EMCS Mat Top Conveyors

Closed mat top systems are flexible, cost-effective solutions, specially designed for transporting large and bulky products. The systems are available in widths from 170 to 850 mm, with or without a friction top. The system is composed of a straight belt conveyor as an alternative to PVC or PU belt conveyors. Horizontal, inclined, and declined are possible (horizontal curves are not possible). Because the chain runs over sprockets, it does not need any additional track control.



## ERA Roller Conveyors

Roller conveyors are available in six different versions:

- Non-powered or gravity roller conveyors.
- 24 V powered roller conveyors.
- 24 V zero pressure roller conveyors.
- 400 V powered roller conveyors.
- 56/57 belts over roller 24 V powered conveyors.
- 400 V powered conveyors. Each type of roller conveyor has specific properties.



# MODU Conveyors



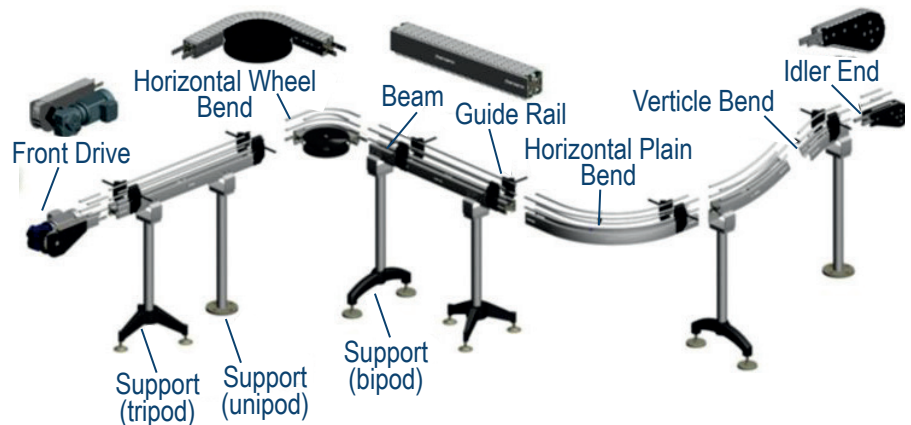
Modu System conveyors are based on a close-fitting flexible chain with the ability to be constructed into many configurations. Products can travel along straights, into curves or even vertically. The system is quickly assembled from standard modules to accommodate almost any layout. Compact horizontal and vertical bends allow MODU systems to use minimal floor space, while ensuring operators have clear access to machinery. Different chain widths and types provide smooth gentle handling, minimising product damage and offering safe & reliable product flow. Standard components are manufactured from anodised aluminium, stainless steel and moulded engineering plastics providing clean professional results. In addition the MODU system is easy to maintain or even modify, minimising costs.

View MODU  
Conveyors Online



## Key Features:

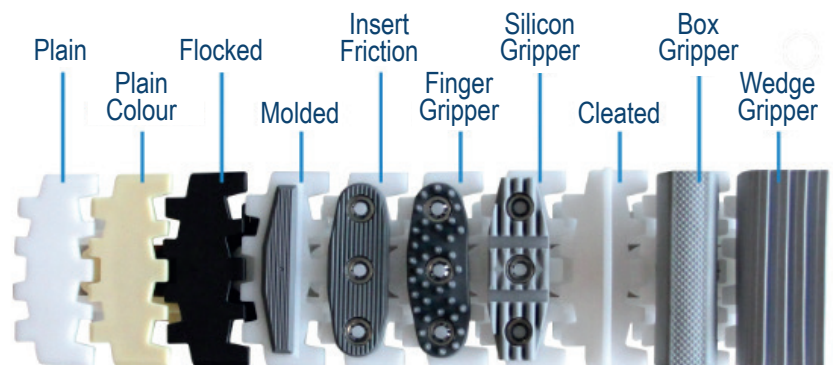
- Minimal dust accumulation to allow for easy cleaning.
- Low noise and power consumption.
- Ability to integrate with other applications and devices such as sensors and diverters.
- Easy to install and flexible to match with site arrangement layout.
- Modular design for easy replacement of component parts, drivers, idlers and wheel bends.



**Modular • Reliable • Flexible**

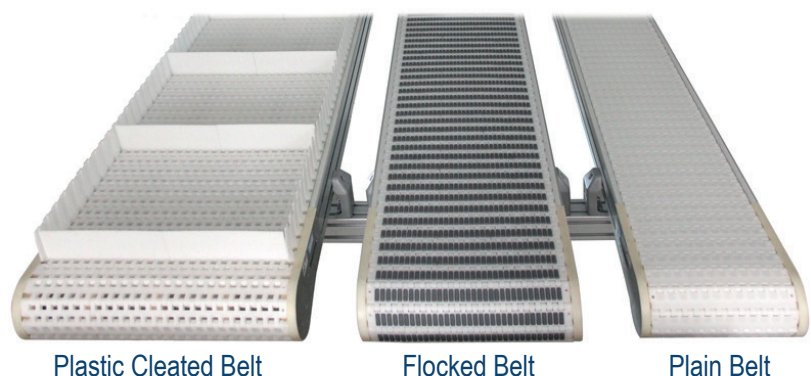
## MODU Plastic Chain

The MODU System provides diverse plastic chain and belt conveyor systems. All conveyor systems can be effortlessly assembled with standard tools. MODU Components are prepared with anodised aluminium and plastic, giving a spotless and artistic outlook. The bends, straights and supports are made up of pre-assembled pieces allowing MODU Conveyors to be reconfigured or assembled in minimal time using simple handheld tools.



## MODU Plastic Belt

The modular plastic belt conveyor system from MODU is a simplified solution for conveying large products. All components of the plastic belt conveyor are standardised for easy engineering, maintenance and operation. MODU System's plastic belt conveyor is reliable, flexible, safe and adaptive to any requirements. Plastic belt conveyor systems are designed to integrate with new and existing production equipment.

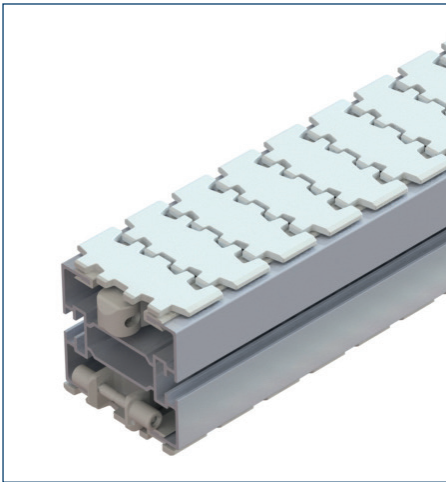




## MODU M Series Conveyor

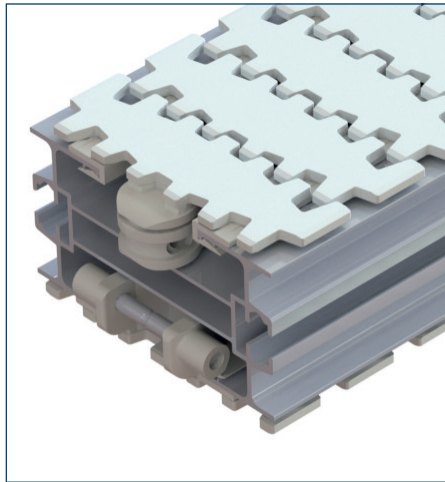
### Thermoplastic Chain with Aluminium Frame Conveyor System

MODU System M Series Conveyors are based on an aluminium profiled beam, ranging from 65mm to 225mm in width, guiding a plastic chain. This plastic chain travels on low friction plastic extruded side rails, to precisely guide the flexible MODU plastic chain.



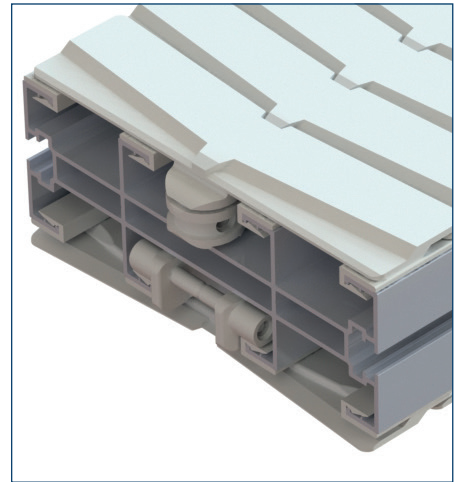
#### Conveyor System MM3

83mm width thermoplastic chain with aluminium frame conveyor system. Also available in stainless steel frame, please refer to DM3.



#### Conveyor System ML2

140mm width thermoplastic chain with aluminium frame conveyor system. Also available in stainless steel frame, please refer to DL2.



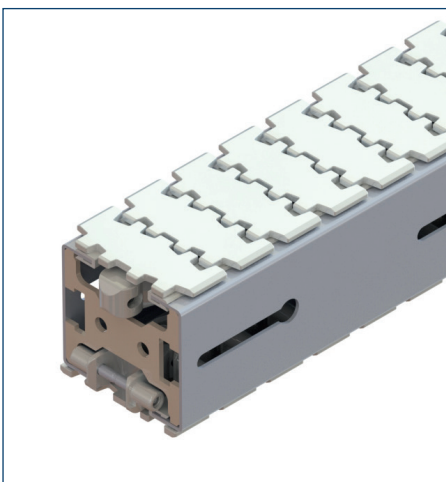
#### Conveyor System MX2

220mm width thermoplastic chain with aluminium frame conveyor system. Also available in stainless steel frame, please refer to DX2.

## MODU D Series Conveyors

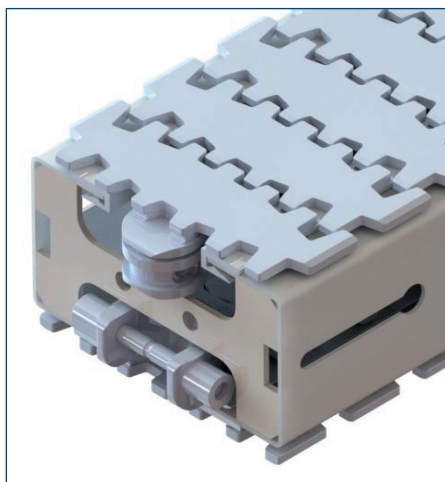
### Thermoplastic Chain with Stainless Steel Frame Conveyor System

MODU System M Series Conveyors are based on an stainless steel profiled beam, ranging from 65mm to 225mm in width, guiding a plastic chain. This plastic chain travels on low friction plastic extruded side rails, to precisely guide the flexible MODU plastic chain.



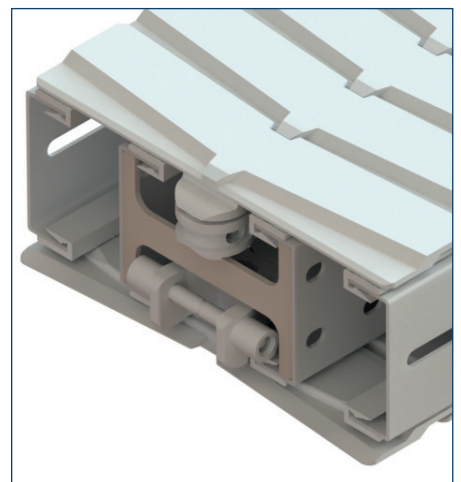
#### Conveyor System DM3

83mm width thermoplastic chain with stainless steel frame conveyor system. Also available in aluminium frame, please refer to MM3.



#### Conveyor System DL2

140mm width thermoplastic chain with stainless steel frame conveyor system. Also available in aluminium frame, please refer to ML2.



#### Conveyor System DX2

220mm width thermoplastic chain with stainless steel frame conveyor system. Also available in aluminium frame, please refer to MX2.

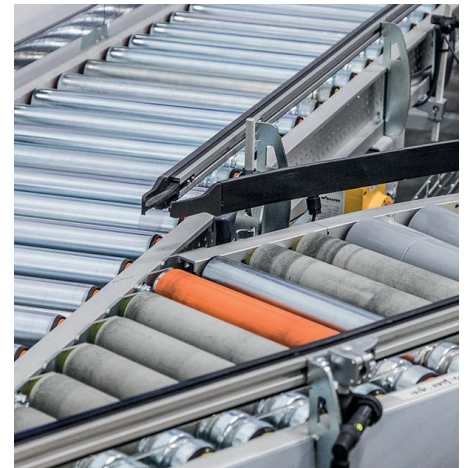
# Roller Conveyors

Roller conveyors can be used in many types of material handling situations such as warehouses, assembly line operations, sorting and packing. Gravity and powered roller conveyors or ball transfers with multi-directional functionality are available.

The gravity roller conveyor is ideal for transporting anything from boxes to pallets. The use of no power makes them a very quiet and cost-effective conveying option. It is a very flexible system as there is a heavy or light duty option available, and they can be installed with a small incline, depending on your requirements.

Powered roller conveyors are cost-effective, strong, and reliable. A powered conveyor prevents manual lifting and shifting operations, by creating a link between existing machinery, reducing double handling of products and labour requirements, helping to increase efficiency. The rollers are typically driven by the bands running from the drive unit and each other.

View Roller  
Conveyors Online



## Key Features:

- Multiple roller spacings.
- A range of rollers to suit applications - PVC, galvanised, stainless steel.
- Bolt together construction makes maintenance simple and easy.
- Widths up to 1000mm (standard).
- Any length section maximum 3000mm (standard).
- Infeed/Outfeed conveyor, solution.

# Slat Chain Conveyors

Slat chain conveyors are suitable for use in industrial and washdown environments. The typical application is for transporting and accumulating bottles, cans and other packaged products. We offer a wide range of Acetal / Stainless Steel Slat Chain Conveyors that can cater handling and conveying requirements for various industries.

**Conveyor Type:** Straight, Bend, Incline, Decline.

**Width:** 82mm, 85mm, 101mm, 114mm, 127mm and 152mm, 190mm Variable.

**Speed:** With VFD Range between 5m/min to 60m/min Belt.

**Material:** Acetal or Stainless steel chain.

**Structure:** Aluminium, MS with Powder Coating / Painting, SS 304.

View Slat Chain  
Conveyors Online





# Stainless Steel Conveyors

Stainless steel conveyors are widely used in applications for food manufacturing and in the pharmaceutical industries where cleanliness and hygiene are imperative. Our Conveyor's modular design comprehends trouble-free line configurations, site installation and maintenance making them cost-effective and simple to use.

There are multiple types for the stainless steel conveyor, to meet many different applications. Types include; Wire Mesh Belt, Modular, Roller and Fully Washdown.

**View Stainless Steel Conveyors Online**



## Stainless Steel Conveyor Key Features:

- Minimum dust accumulation to allow for easy cleaning.
- Low noise and power construction.
- Ability to integrate with other applications and devices such as sensors and diverters.
- Easy to install.
- Modular design for easy replacement of component parts, drivers, idlers, and wheel bends.
- Lightweight design.
- System is available in aluminium as an economical solution.



# Accumulation Conveyors

Accumulation conveyors are designed to momentarily hold and accumulate products before releasing them to the next production phase. With the use of an accumulation conveyor, it can help to control product flow when items from multiple lines must be merged into a single line and to even out product line variations. Accumulation conveyors come in two different configurations: accumulation table and alpine conveyor.

With a large storage capacity, the Accumulation table accumulates products to generate mass buffering in order to accommodate other processes in a production line. This equipment is driven by two gear motors which drive alternating conveyors in opposite directions. It also uses a straight running chain to avoid damage to the product. Falling products are discarded at the turning ends.

The alpine accumulating conveyor is compact with a spiral configuration and is used as an accumulation or elevating buffer zone between machines. It can also be used for cooling, drying purposes or to move the products vertically.

**View Accumulation Conveyors Online**



## Key Features:

- Creates a buffer zone between processes.
- Merges multiple line items into a single line.
- Controls product line flow as well as singulates products on outfeed.
- Prevent congestion in conveying lines.



# Gripper Conveyors

A Gripper conveyor consists of two sets of conveyors with gripper belting to move product from a lower elevation to an upper elevation or vice versa, taking up minimum floor space

Gripper conveyors are an ideal set up for high-speed production or packaging line. It holds the product in a firm but gentle manner before releasing it to another conveyor. Gripper conveyors are widely used to elevate and lower food and beverage products. It consists of two parallel sets of conveyor sections that are joined on an adjustable mechanism which allows the unit to accommodate different size products.

View Gripper Conveyors Online



## Key Features:

- Saves floor space and conveyor length.
- Maximize space utilization by creating buffering at ceiling levels.
- Easily integrates with other application such as blowers, fillers, and packaging lines.
- Flexible and lightweight.
- Easy to install and accommodate site layouts.
- High capacity vertical transport.



# Speciality Conveyors

We build a wide range of conveyor systems and can design and build speciality conveyors custom to suit your application and industry. Our speciality conveyors can include elevator, lowerator, 90-degree and spiral conveyors, plus much more!

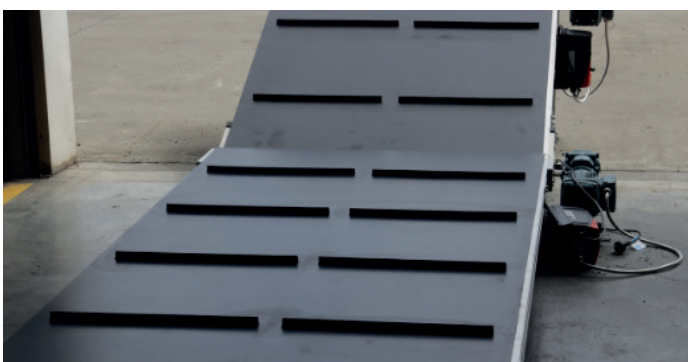
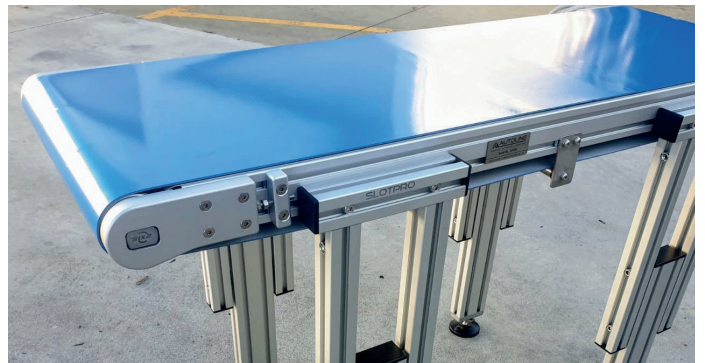
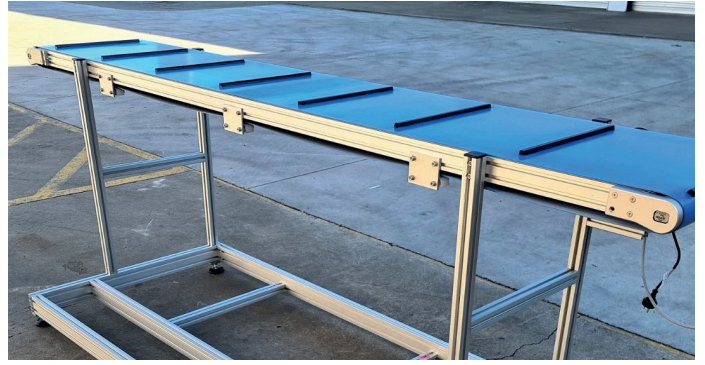
Elevator conveyors are used to elevate a product between multiple levels and a 90-degree conveyor allows a production line to turn corners without changing the orientation of the part. We also have a wide range of conveyor componentry and parts such as belts, feet, side guides and drive drums.

View Speciality Conveyors Online





# Our Work







ROBOTICS • AUTOMATION • CONVEYORS

0800 37 55 66 | [sales@autoline.nz](mailto:sales@autoline.nz) | [www.autoline.nz](http://www.autoline.nz)

